

Compare the photographs of York's buildings. How have they changed over time? How have they remained the same? Can you suggest reasons for changes and similarities?



York Railway Station P1998.72 York Residency Museum Collection



Private home C Clarke 2017



THE  
RESIDENCY MUSEUM  
YORK



Cottage P1998\_094 York Residency Museum Collection



CWA Building York Residency museum Collection



THE  
RESIDENCY MUSEUM  
YORK



Mrs Pyke's Temperance Hotel P1998\_163 York Residency Museum Collection



Shop and Gallery C Clarke 2017



THE  
RESIDENCY MUSEUM  
YORK



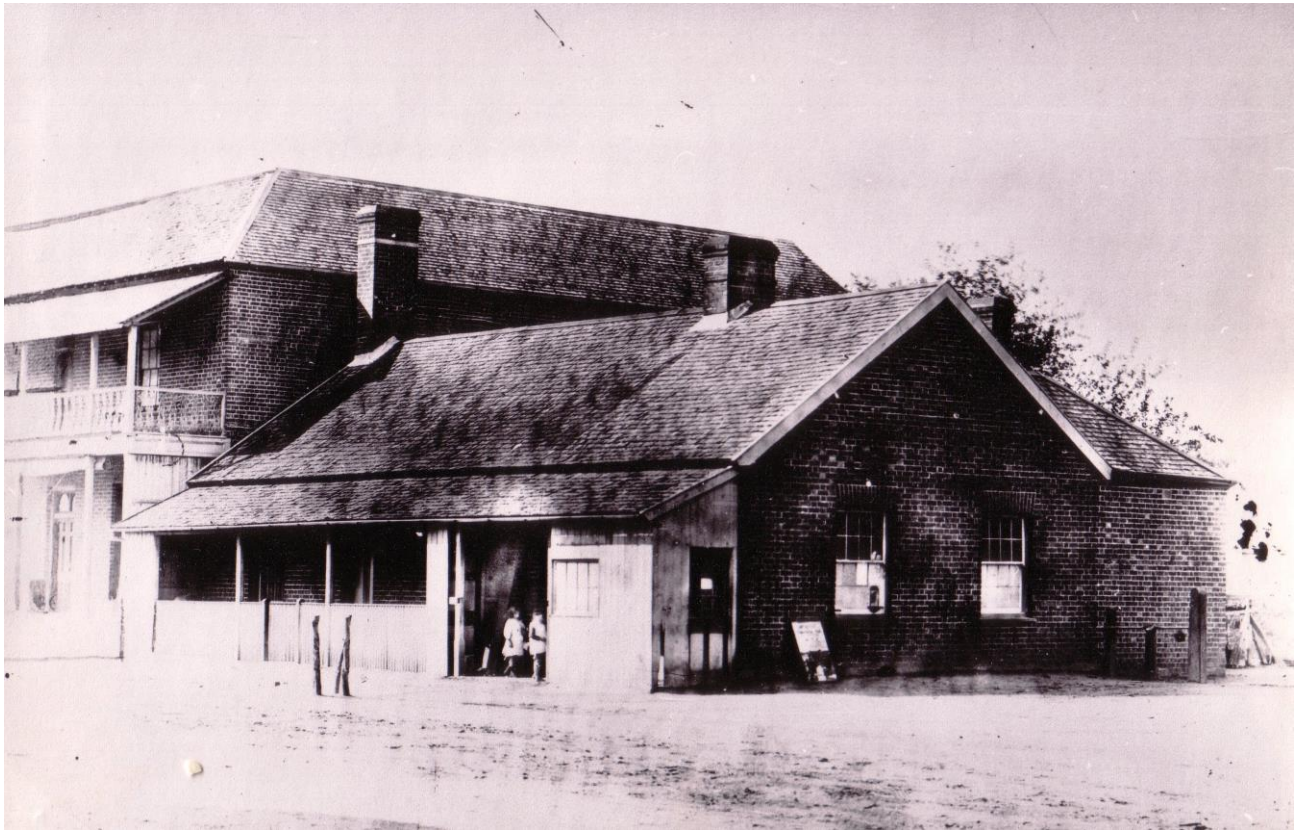
Edwards' Store P2008\_407 York Residency Museum Collection



IGA Supermarket York Residency Museum Collection



**THE  
RESIDENCY MUSEUM  
YORK**



Post Office

P1998\_51b

York Residency Museum Collection



Post Office

York Residency Museum Collection



THE  
RESIDENCY MUSEUM  
YORK

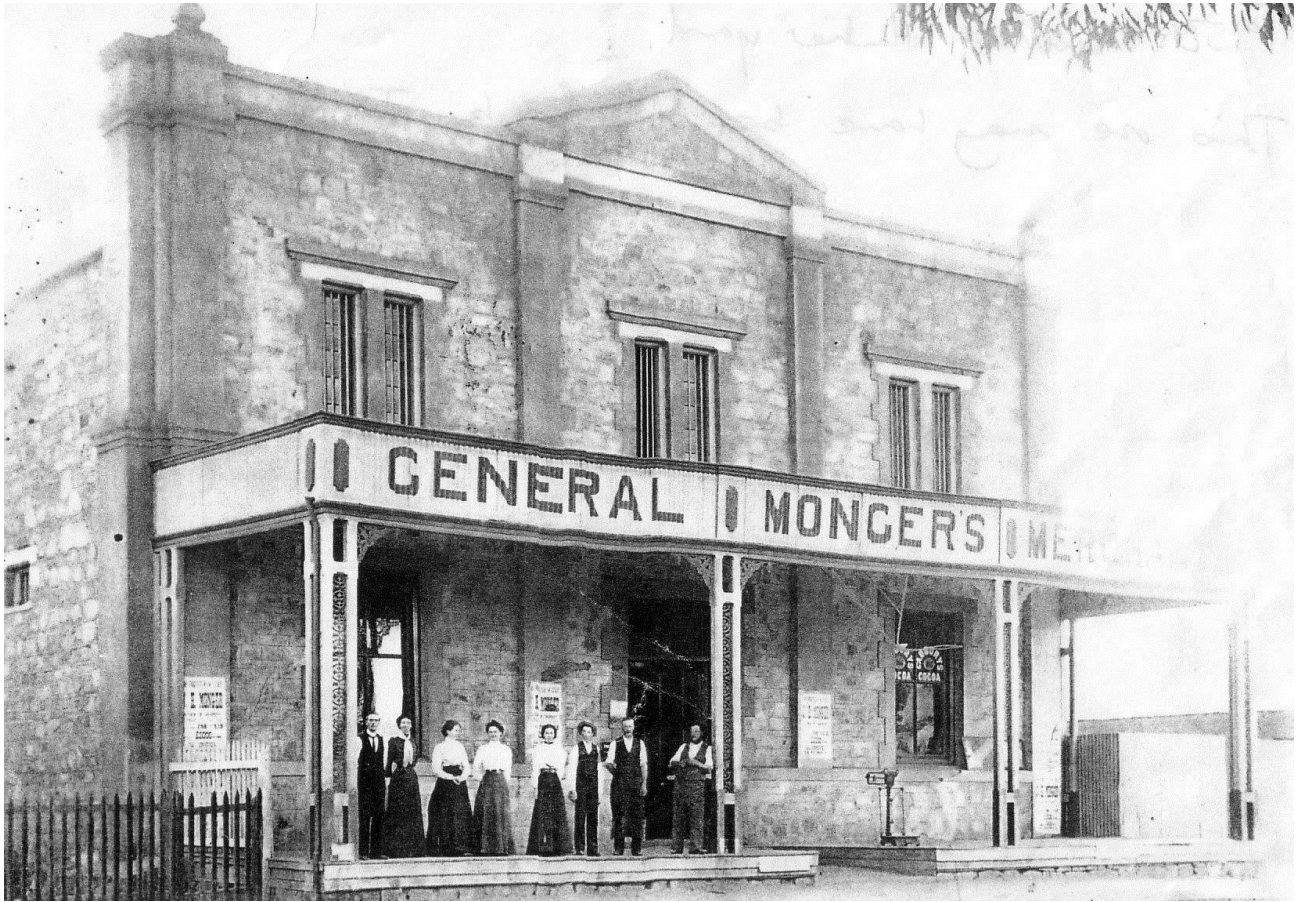


Dalgety's Store P1998\_196 York Residency Museum Collection



York Motor Museum York Residency Museum Collection





Monger's Store P2010\_29 York Residency Museum Collection



Derelict building C Clarke 2017



**THE  
RESIDENCY MUSEUM  
YORK**



York State School P1998\_058 York Residency Museum Collection



York Health Hub C Clarke 2017



THE  
RESIDENCY MUSEUM  
YORK



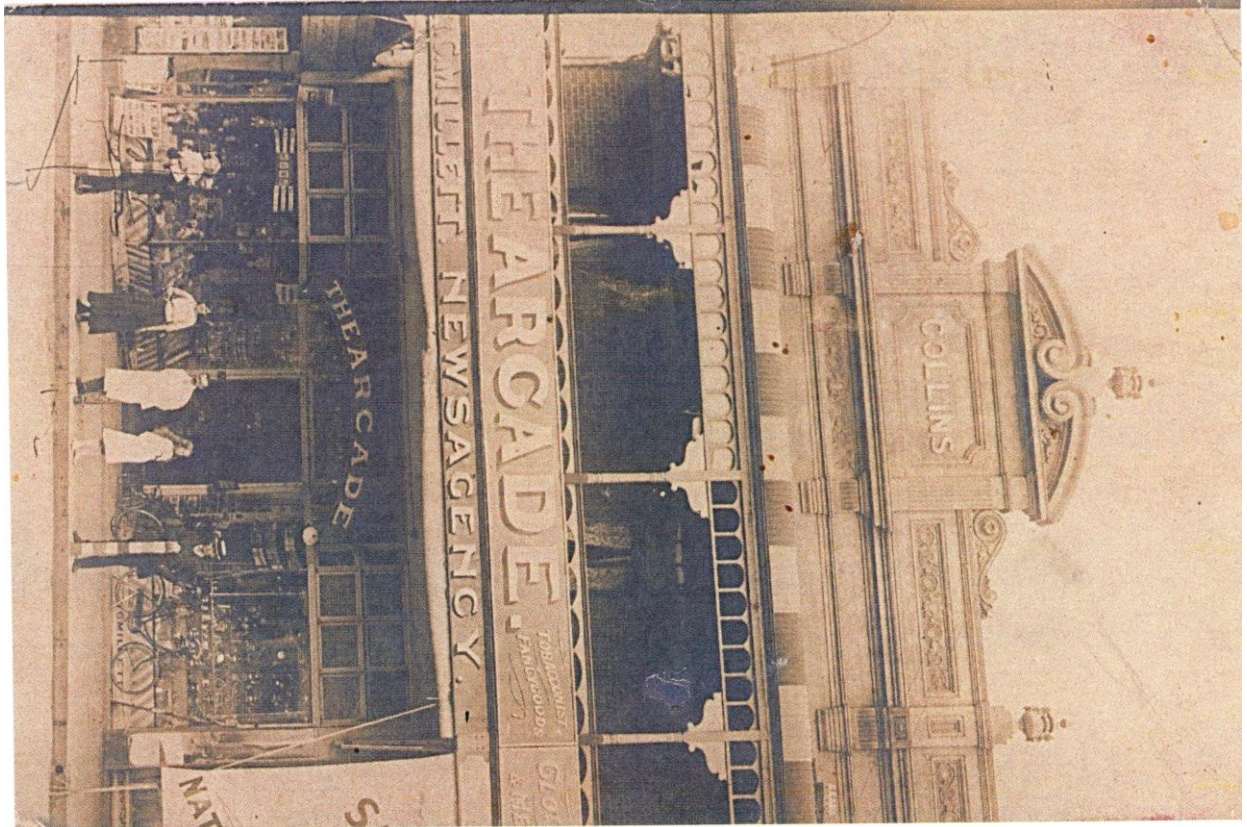
Council Chambers P1998\_21b York Residency Museum Collection



Barclay Books C Clarke 2017



THE  
RESIDENCY MUSEUM  
YORK



Collins Building      Courtesy York Residency Museum



Collins Building      York Residency Museum Collection