



PRESENTED BY



EVENT DATE: SATURDAY 2ND & SUNDAY 3RD SEPTEMBER 2017
MARKETING COLLATORAL EVIDENCE

EVENT WEBSITE

PAGE VIEWS: 3,248

AVERAGE TIME ON PAGE: 3 mins 48seconds

<https://www.element.asn.au/event-profile/york/>



YORK CYCLING FESTIVAL

HOME THE SERIES RESULTS RACE REPORTS

YORK CYCLING FESTIVAL – PRESENTED BY THE SHIRE OF YORK



PRESENTED BY



» HOME

» THE SERIES

» RESULTS

» RACE REPORTS

REGISTRATION PAGE

Home Register

This Event Is Now Closed.

[Login](#)

York Cycling Festival - presented by the Shire of York

2 September and 3rd September 2017

Saturday 2nd September 2017 Hill Climb 1st Rider off at 10.30, registration from 9.30am

Saturday 2nd September 2017 Participation Gran Fondo with Travis Meyer 12.00pm

Saturday 2nd September 2017 Road Race at 1.30pm, registration from 12.00pm

Sunday 3rd September 2017 Criterium 10.30am, registration from 9.00am

York and the Avon Valley have along history of racing. The flat riverside gives way to short hills just out of town where the racing will be fun and challenging. Stay local and see what this beautiful town just 90km from Perth has to offer.

Event Entries close : **Tuesday 29 August 2017 midnight**
No refunds are available from **28/8/17**

Thank you to the Shire of York for supporting the Inaugural York Cycling Festival



Event Details

York
[View larger map](#)



2017 Google - Map Data [Terms of Use](#)

Location: York, Western Australia

Event Date: Saturday 2 September - Sunday 3 September 2017

[Add Event to Calendar](#) [Contact Us](#) [Visit Event Website](#)

Telephone: 08 9356 9680

Website:

RIDER GUIDE

PAGE VIEWS: 608

TIME ON PAGE: 4mins 35 seconds

<https://www.element.asn.au/rider-guide/york-cycling-festival-riders-guide/>

SPONSORS

Thank you to the Shire of York for sponsoring the York Cycling Festival.



FLYERS



YORK CYCLING FESTIVAL ★★★★★

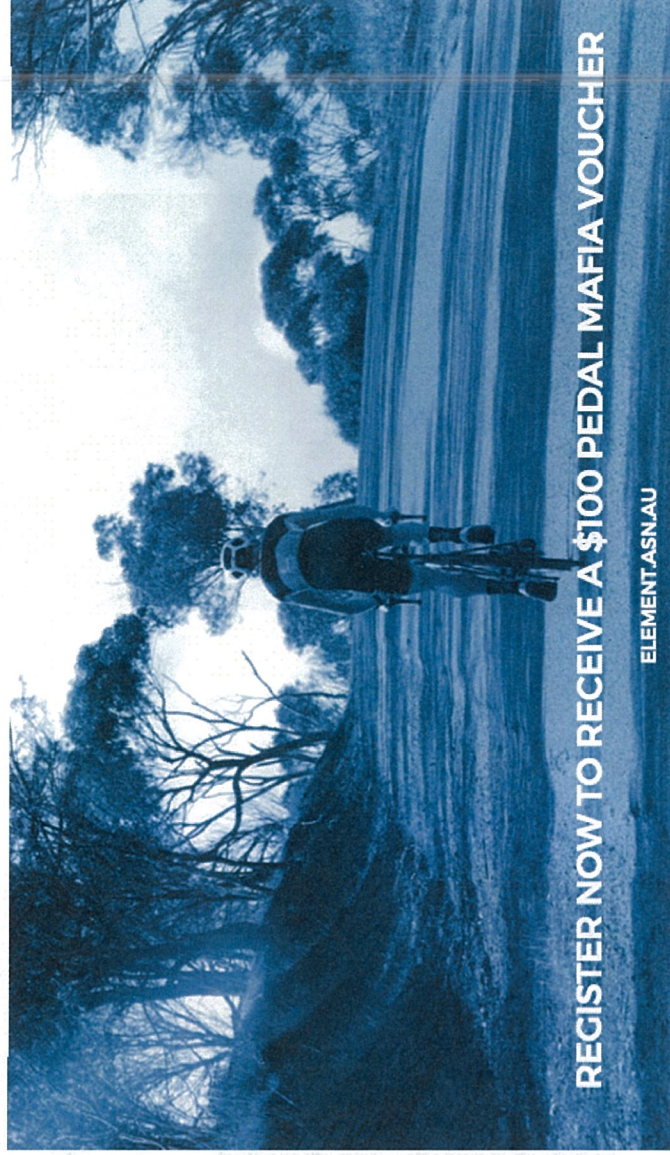
SATURDAY 2ND & SUNDAY 3RD SEPTEMBER 2017

KING & QUEEN OF THE MOUNTAIN
ROAD RACE
CRITERIUM
COMMUNITY DINNER

RACING IN ITS PUREST FORM
ELEMENT.AS.N.A.U

SPORZA
exercise institute
Cycling Development Foundation
WEST CYCLE
CycleSport
ELEMENT

Pedal Mafia



REGISTER NOW TO RECEIVE A \$100 PEDAL MAFIA VOUCHER
ELEMENT.AS.N.A.U

SPORZA
exercise institute
Cycling Development Foundation
WEST CYCLE
CycleSport
ELEMENT

EMAIL CAMPAIGNS

ENJOY THE YORK AGRICULTURE SHOW



Come and spend the day with the local community at The 17th York Agricultural Show on Saturday 2nd September.

Experience a bit of country life and wander through the exhibition pavilion and view many citizen crafts, home grown produce, cooking and photography. The show is full of entertainment, games and prizes for all the family. There will be a special display of eggs made through the crowd. Lay shopping, play, wheel making, bag making, a Paddock Walk for the younger children where they can walk around picking up surprises or join in the fun of painting rocks.

Finish the day with a meal and refreshments at the club bar while you watch the Fireworks display at 7pm.

THANKS TO THE SHIRE OF YORK



York is situated approximately one and a half hours' drive, or 97 kilometres, from Perth. The shire was founded on the banks of the Avon River in 1831, and was the first inland European settlement in WA.

<http://mailchi.mp/westcycle.org.au/n6cigwrvkt-1815137>

RACE DAY PROCEDURES
No horses, no race and no on-site cameras. Discs should now be used. Any overnight breaking should be reported to the Shire of York from the race. See the [REGULATIONS](#) for more.

REMINDER
The roads are open so please obey the road rules and have respect for the residents. We cannot manage all the traffic so you may need to ride around a car or sit behind them, so be prepared especially in the start finish area. Show respect to both the cars on the road and your fellow riders.

WARM UP AREA
You will not be permitted to warm up on any part of the racing course, there will be an area on Pioneer Avon Park to warm up.


SKODA
We want to thank Skoda for being supporters of the Elment Road Series. Look out for our Elment branded SKODA Superb at Collie [MORIE](#).

SHIRE OF YORK
We would like to Thank the Shire of York for being our partner in this event. Find out more about the Shire [HERE](#).




<http://mailchi.mp/3240a8083a15/the-element-tom-lowry-start-list-1819105>

WELCOME TO THE YORK CYCLING FESTIVAL



THE CYCLING FESTIVAL

SATURDAY 2ND SUNDAY 3RD SEPTEMBER 2017

KING QUEEN OF THE MOUNTAIN ROAD BIACE CHALLENGE COMMEMORATIVE

RACING IN ITS PUREST FORM
ELEMENT.AU.AU

THANKS TO THE SHIRE OF YORK



York is situated approximately one and a half hours' drive, or 97 kilometres, from Perth. The historic town was founded on the banks of the Avon River in 1831, and was the first inland European settlement in WA. Many of York's original Victorian and Federation buildings have been retained and it is one of the few towns in WA to enjoy historic town character.

<http://mailchi.mp/westcycle.org.au/yorklaunch?e=LUNIQID>

COREFLUTE SIGNS



SOCIAL MEDIA POSTS

The Element Road Series
Published by Francis Curro (1) · August 22 at 7:29pm ·

Riders have only one week left to register for the York Cycling Festival - Presented by the Shire of York. We are looking forward to seeing you down there for this two-day tour which is bound to shape the Element Road Series Leaderboard.
<https://eventdesq.sportstg.com/index.cfm...>



York Cycling Festival - presented by the Shire of York

York Cycling Festival - presented by the Shire of York
EVENTDESQ.SPORTSTG.COM

The Element Road Series
Published by Cameron Wong (1) · July 26 ·

Welcome to the York Cycling Festival - presented by the Shire of York. Join us for the ultimate Father's Day weekend in the beautiful Avon Valley, the York Cycling Festival is the perfect mix of time away with family and friends, leisure and of course riding. Western Australia... See More



8,232 people reached

3.2K Views

View Results

The Element Road Series
Published by Cameron Wong (1) · August 16 at 7:35pm ·

PEDAL MAFIA ARE GIVING THE FIRST 100 REGISTERED RIDERS A \$100 VOUCHER

We're pumped to welcome Pedal Mafia as a partner for the York Cycling Festival - Presented by the Shire of York! You've probably seen the kit around and may have checked out their new store in Subiaco, now we have a special offer just for you.

MORE: <https://www.element.asn.au/partners/pedalmafia/>



6,884 people reached

View Results

The Element Road Series
Published by Cameron Wong (1) · August 2 ·

FREE ENTRY TO THE YORK AGRICULTURAL SHOW FOR THE FIRST 100 REGISTERED RIDERS

Come and spend the day with the local community at The 171st York Agricultural Show on Saturday 2nd September. Experience a bit of country life and wander through the exhibition pavilion and view many different crafts, home grown produce, cooking and photography. The oval is full of endless music and entertainment, animals and rides. ... See More



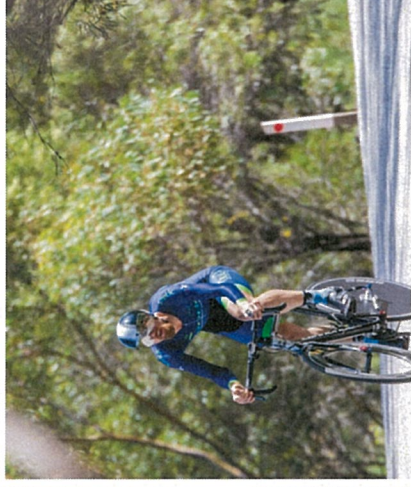
428 people reached

Best Post

MEDALS



EVENT PHOTOS – HILL CLIMB



https://www.facebook.com/43479225352343/photos/?tab=album&album_id=534651173546450

EVENT PHOTOS – ROAD RACE



https://www.facebook.com/43479225352343/photos/?tab=album&album_id=535687193442848

EVENT PHOTOS – CRITERIUM



<https://www.facebook.com/media/set/?set=a.535805623431005.1073741840.434792253532343&type=1&l=2b4c3c57ef>

VIDEO

- Event Launch - https://www.youtube.com/watch?v=cRBPwlgRF_4&t=7s
- KOM Course Preview - <https://www.youtube.com/watch?v=-b8a2huNUE0>
- Road Race Course Preview - https://www.youtube.com/watch?v=GtwYR_HMU1o
- Criterium Course Preview - <https://www.youtube.com/watch?v=|YU2Mbk9wZk>
- Melissa Robinson - <https://www.youtube.com/watch?v=YLQtIz8hQ0s>
- Theo Yates - https://www.youtube.com/watch?v=64r0pSR_5U4
- Michael Freiberg - https://youtu.be/V5_S58LZt8o
- Emily Mascaro - <https://www.youtube.com/watch?v=ACwjdlAaZPY>
- Brad Hall - <https://www.youtube.com/watch?v=VtEOJ5nk0-k>

TESTIMONIALS

- "I would like to thank you for the great event that was held at York a couple of weeks ago. The vibe in the town, especially on the Sunday, was awesome. Everyone seemed to have a smile on their face and I got quite a few really positive comments from the locals. The lady in the coffee shop was especially complimentary of your comments during the day and said that it kept her in the picture while she was working and couldn't watch the races. I agreed with her – I really liked your commentary so keep up the great work and hope you guys can run York again next year. Overall all the country races are great but, to me York, Pemberton and Goldfields really stood out." - Anna Heitz - B grade Women's Series Leader
- "It was a pleasure to race in such a great location with such a community feel, well done to the organisation and well done to the Shire for committing to support WA Cycling" - Michael Freiberg - A grade Men's Series Leader
- "How cool is it to have this here in the streets of York, please come back" - Cafe owner - Jules Cafe

FEEDBACK

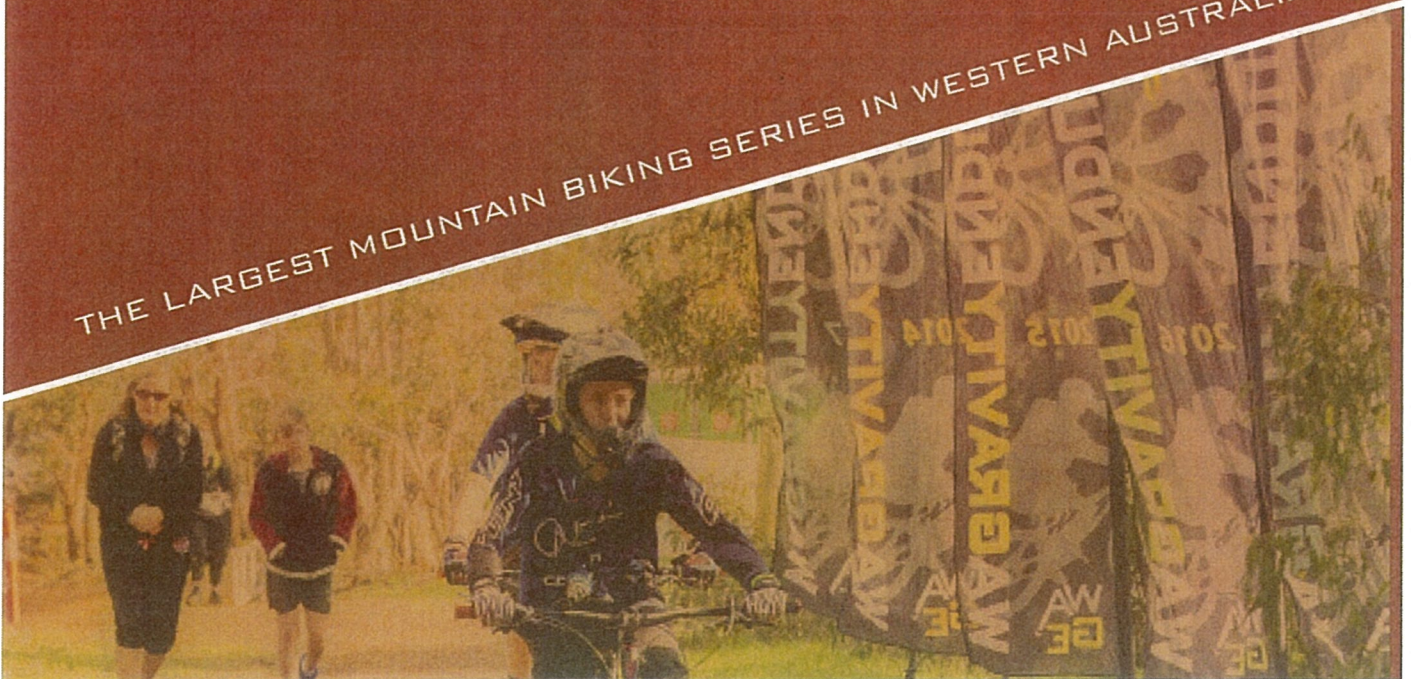
- Riders were impressed with the scope of multiple stages held in close proximity to one another
- The centrally located event village was positively received
- Closed circuit criterium course was welcomed by all, resulting in a safe, fast and exciting race
- The Criterium, held on Sunday, was strongly supported with approximately 1,000 spectators present
- Response from the local businesses was very positive, with several positive comments from business operators



EVENT PROPOSAL
FOR THE SHIRE OF YORK
EVENT PROPOSED FOR
26-26TH AUGUST 2018

WESTERN AUSTRALIAN
GRAVITY ENDURO
MOUNTAIN BIKING SERIES

THE LARGEST MOUNTAIN BIKING SERIES IN WESTERN AUSTRALIA



TIMELINE TO EVENT

WA GRAVITY ENDURO

SHIRE OF YORK

August 27



FINAL EVENT PACKUP

Portable toilets to be removed
All road signage and course signage. trail bunting removed

August 25 - 26



WA GRAVITY ENDURO EVENT

See Draft Schedule for details

August 18 - 19



INFORMAL PRACTISE

Informal practise to test trail alignments and safety check.
Cross-promote with York Cyclocross Event.
Small Directional Arrows on road reserve installed to assist riders transition from Town Centre to Mt Brown.

August 11 - 12



TRAILS SETUP

WAGE to begin course stage bunting and signage ensuring minimal/no impact to the existing lookout area atop Mt Brown.

July 29



PENDING APPROVAL, WAGE ANNOUNCEMENT

WAGE officially announces venue change from Kalamunda to York

July 2 - 13



COMMUNITY ENGAGEMENT

2 x Community Discussion Sessions (1 weekday and 1 weekend) plus contact with Trails Reference group

June 28



EVENT APPLICATION

Formal Event Application Submitted to Shire

June 18 - 24



WAGE INVESTIGATION

WAGE concludes that York Townsite and existing Mountain Bike Trails on Mt Brown are suitable for a Mountain Bike Event.

Early Sep



DEBRIEFING

Shire and WAGE to meet to discuss event (feedback, improvements etc)

Jul 30 - Aug 10



PROMOTION

Shire to assist with local advertising and encourage local business and resident support. WAGE can assist.

July 25



FINAL DECISION

2 x Community Discussion Sessions (1 weekday and 1 weekend) plus contact with Trails Reference group

July 16 - 20



SHIRE REVIEW

Shire to review Community Comments and Feedback. Compile recommendation for Event. WAGE can assist if required.

June 26 - 29



SHIRE EVENT APPLICATION REVIEW

Shire to review application and make requests for further information of WAGE if required. York Shire to work with WAGE to secure Race Village Location.

EVENT SCHEDULE

WA Gravity Enduro National Gravity Enduro Mountain Bike Event



Event Schedule

24th Friday

6 portable toilets delivered to Mt Brown

25th Saturday - bump-in

0800 Race Village Setup

Race Village is typically for rider check-in and information and as a 'base' for equipment collection and communications

Race Village Setup typically includes:

- Parking 6m trailer
- 3 3m x 3m popup marquees
- Sponsorship Banner Flags and scrim
- Sponsor Marquees
- Bike Racks

0800 Traffic Control at base of Steere Road to permit residents and the general public access but not permit event competitors to travel to top of Mt Brown by vehicle. If competitors are caught, this will result in time penalty or disqualification.

1000 Official Practise (St John Ambulance Arrive at Mt Brown)

1500 Official Practise closes (St John Ambulance Departs)

1630 Race Village Closes

Possible installation of Event Fencing on footpath to secure area

26th Sunday - Race Event

0730 Race Village Opens

0900 PA System turned on (respectable volume, music amplified)

0930 Mandatory Race Briefing at Race Village

0945 Riders transition to Mt Brown using road (not raced)

1000 Riders arrive at Mt Brown and begin their multi-stage Gravity Enduro Race (timed)

1400 Course Closure - riders return to Race Village (not raced)

1430 Presentations

1730 Race Village clean and cleared of Town Centre

27th Monday - bump-out

Toilets collected by contractor

Final road signage, course tape and signage to be removed

Established from humble beginnings, WA Gravity Enduro is committed to creating memorable mountain biking experiences for all.

Our small and passionate team has hosted over 25 mountain biking events over 5 years across many locations in the south-west of Western Australian and we are always looking for new venues to create diverse, attractive and exciting experiences for our Community.

Our experience, professionalism and partnerships developed over the years has helped us grow to become the biggest Mountain Biking Series in Western Australia.

Not only have we grown, we have also grown the sport of Mountain Biking by donating heavily back to the trails to assist with ongoing repair, sustainability and development, donate to raise funds for Junior Mountain Biking Race Development and invest heavily in our equipment to ensure we have the latest tools and technology enable our competitors from the Elite to the 'Weekend Warriors' to enjoy competing professionally or just for 'bragging rights' between mates.

We are always on the lookout to find new venues for our Mountain Biking Events to:

- increase awareness of Mountain Biking in WA
- create memorable and unique experiences for our Competitors, friends and families
- to generate tourism for local businesses
- to donate to trail custodians to support local trail sustainability and development
- and to challenge our local and interstate competitors racing on different trails in new locations.



Sam Hill - Perth Resident, multiple Downhill World Champion and Enduro World Series Gravity Enduro Champion 2017



WA Gravity Enduro believes York is a wonderful fit to achieve these goals and we believe York can benefit socially through the establishment of a Mountain Biking Area on Mt Brown, and economically through the hundreds of people who will visit York before and during the event - not to mention returning riders who will be attracted to this new mountain biking area.

WA Gravity Enduro is not seeking financial support from the Shire.

We would like to work with the Trails Committee or an equivalent group to help with the ongoing development of the Mountain Biking Area which could include signage to assist walkers, riders and the general public in the safe management and use of the area.

Please find following information to support our event proposal and if you require anything further, please do not hesitate to contact the undersigned.

Regards

A handwritten signature in black ink that reads 'Janiec'.

Steve Janiec
RACE DIRECTOR

e steve@wagravityenduro.org
f [facebook.com/wagravityenduro](https://www.facebook.com/wagravityenduro)
w wagravityenduro.org
y [youtube.com/wagravityenduro](https://www.youtube.com/wagravityenduro)
i [instagram.com/wagravityenduro](https://www.instagram.com/wagravityenduro)
m 040 744 6273



Event Application Form

SHIRE OF YORK	
CS. CEV. 3	
NAME	DETAILS
GEORGE	
29 JUN 2018	
F 16.7.484	
REFERRED TO COUNCIL	
DATE	INITIALS

Organiser's Details

Name of Event: WA Gravity Enduro National Round

Applicant/Organisation: Steve Janiec / WA Gravity Enduro

Contact Person (if different from above):

Postal Address: 52 Ravendale Drive Dudley Park WA 6210

Telephone (hm): (wk) (mb) 0407 446 273

Email address: steve@wagravityenduro.org

Event Details

Date: 25th and 26th August 2018

Actual Set Up Date: Course setup on Mt Brown 18-19th and Race Village 25th August 2018

Actual Event Start Date: 26th August 2018

Actual Event Finish Date: 26th August 2018

Actual Completion of Clean Up Date: 27th August 2018

Proposed Venue Details: (e.g. Sporting, Commercial, Entertainment)

Mountain bike racing to occur on on the Mountain Bike Trails at
Mt Brown. The Race Village (where the timing area, race briefing and general
congregation before and after the race) proposed for either Settlers Village Court or
Pioneer Avon Park (TBC after discussion with Council).

Brief Details of Proposed Entertainment (e.g. Number of Stalls/Products/Entertainment - Bands, amplified music/Animals/Activities/Farm Machinery/Rides, etc)

This event is a Mountain Bike Race occurring on the mountain bike trails on Mt Brown. We
enjoy bringing bringing our 300+ Community to experience new locations which we hope in-
turn generates economic value to the hosted venue. Time racing only occurs on Mt Brown -
riding to and from York Townsite is untimed and competitors must follow the road rules at all
times.

Primary Purpose of Event (e.g. Commercial Operation/Community Fundraiser)

Mountain Bike Race

Will Alcohol be available/consumed on site? (please circle) Yes No

Will food be available? (please circle) Yes No

Details of any tents, marquees, stages to be used for the event

Tents: 3 - 4 3m x 3m popup marquee

Stage: we have a 400mm high x 2m x 1m platform used as a 'stage'

Details of any road closures or use of roads for the event

We would not like to close roads to minimise impact on local residents and tourists visiting Mt Brown.

However, we would like to erect small road signage (arrows) guiding riders and spectators on the best way to get to Mt Brown from the Race Village. Additionally, we would like traffic control at the bottom of Pioneer Road advising tourists to proceed with caution and to ensure no competitors are using a vehicle to 'shuttle' to the top of Mt Brown. Competitors doing this risk disqualification from the race.

Expected Attendance

Maximum Number of People Expected at any given time: 350

Anticipated Total Number for Entire Event: 450

Target Audience (e.g. Youth, Adult, Family):

This event is open to all competitors. We usually attract competitors from 8yrs to 68yrs of age. We anticipate the race is tailored more towards intermediate to advanced riders due to the challenging terrain, expectations of interstate competitors and distance.

You must ensure that all requirements you make, including emergency procedures, meet the needs of people with disabilities.

Post event arrangements should be considered to transport patrons from the event (e.g. availability of taxis, buses, etc)

Have you event conducted this event before, and if so, when/where was it held?

Yes, this will be our 31st event of this nature. We hold events with various other Cities and Shire's as well as private property. We liaise closely with all relevant authorities to seek approval and work professionally with the Community when required.

Event Facilities

Power Supply Details: (generators or existing) We have an existing portable generator used to power laptops and the PA system. We utilise an RCD after the generator and tag all cables.

Water Supply Details: (scheme, rainwater or bottled):

We have several 50L water containers which are filled from scheme water services.

Toilets Available:

	<u>Closets</u>	<u>Urinals</u>	<u>Hand Wash Basins</u>
<u>Male</u>	8		8
<u>Female</u>	8		8
<u>Disabled</u>	1		1

this includes existing toilet block plus 6 hired portable toilets

Event Fees / Bonds Paid

Yes No

May apply depending on event type (Event application fee of **\$149.00** is required before event approval can proceed).

Acknowledgement

I, Steve Janiec as the event organiser, applying for approval to host an event in the Shire of York, acknowledge that the information and completed actions in my application are true and correct. I accept full responsibility of the facility and / or Reserve during the specified hire period and will ensure compliance with the Shire's conditions of hire and local laws. I will indemnify the Shire against any action, suit or proceeding caused by my failure to observe all statutory and other requirements or as a result of my negligence or wilful actions. I will ensure that appropriate liability and other insurances are in place for the activities to be conducted.

I understand that the Event Application Package is a guide and has been compiled according to a number of statutory requirements. There could be other requirements that exists outside of the package and that as the event organiser, I am responsible.

Signature: 

Date: 28/06/2018

Site Plan

A detailed layout of the event is to be included with your application. Please ensure the following is indicated on the map (if applicable):

- | | | |
|----------------------|--|--|
| > Stage | > Fenced off areas | > Location and Number of
Additional Toilet Facilities |
| > Food Stalls | > Lighting | > Any other Facilities
Relevant
to your Event |
| > Electricity Cables | > Vehicle Access Points,
including street names | > Location of Fire Safety
Equipment |
| > Parking Areas | > Location of
Marquees/Tents | |
| > Site Signage | > Sale or Consumption of
Alcohol Areas | |
| > Seating | > North Point | |
| > First Aid Post | | |
| > Emergency Exits | | |

It is suggested that a copy of the finalised site plan be issued to Police, Fire Services, SES and other relevant emergency services, First Aid and Security Personnel and participants.

Application Package Submission Checklist

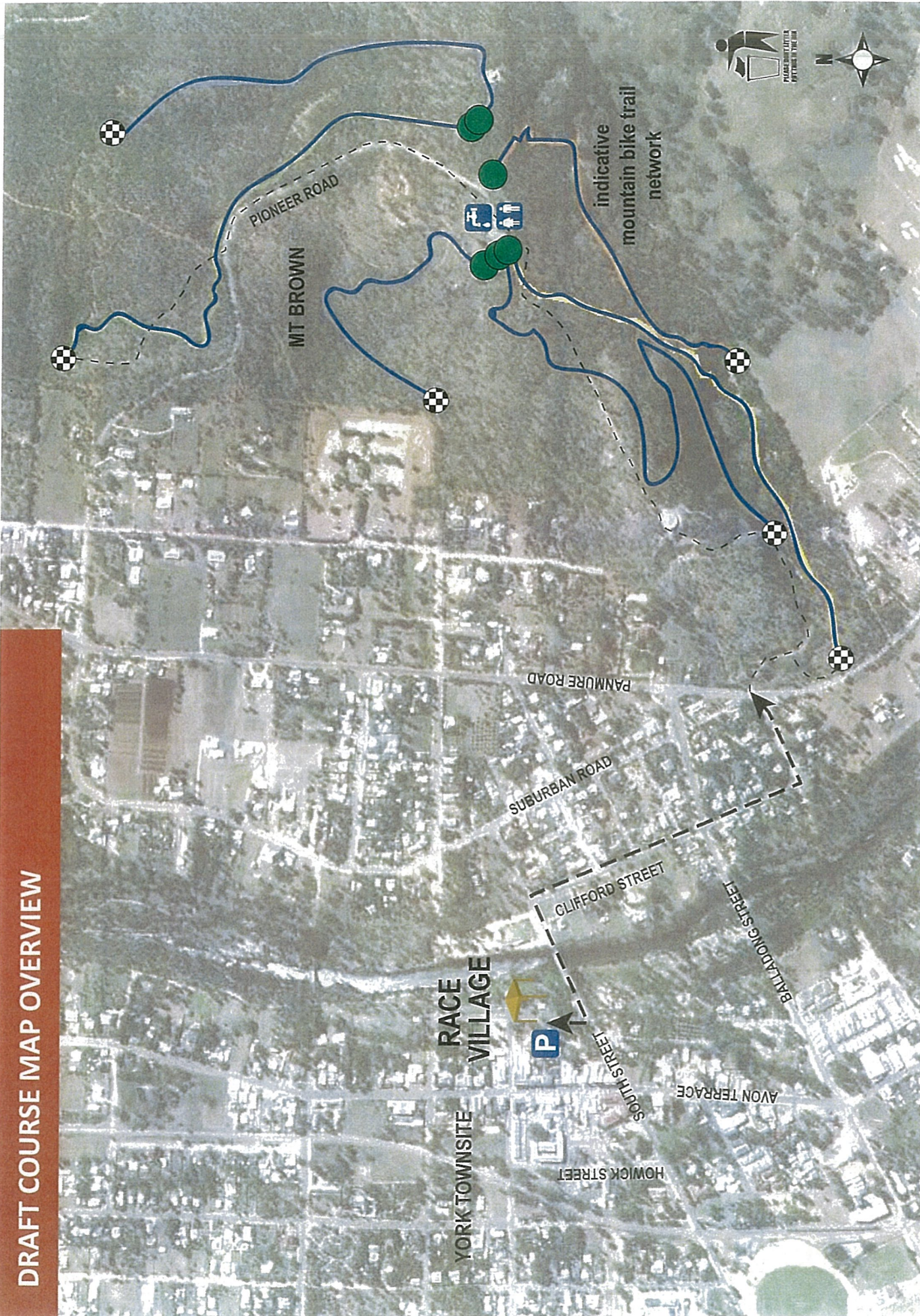
READY TO GO??

In the interests of ensuring that all runs smoothly, the Shire's Health Department should be provided with the office and emergency contact details for the organising committee / organization. Nominating one person to deal with the Shire's Health Department and to organise the necessary approvals can ensure that all jobs are done and loose ends are tied.

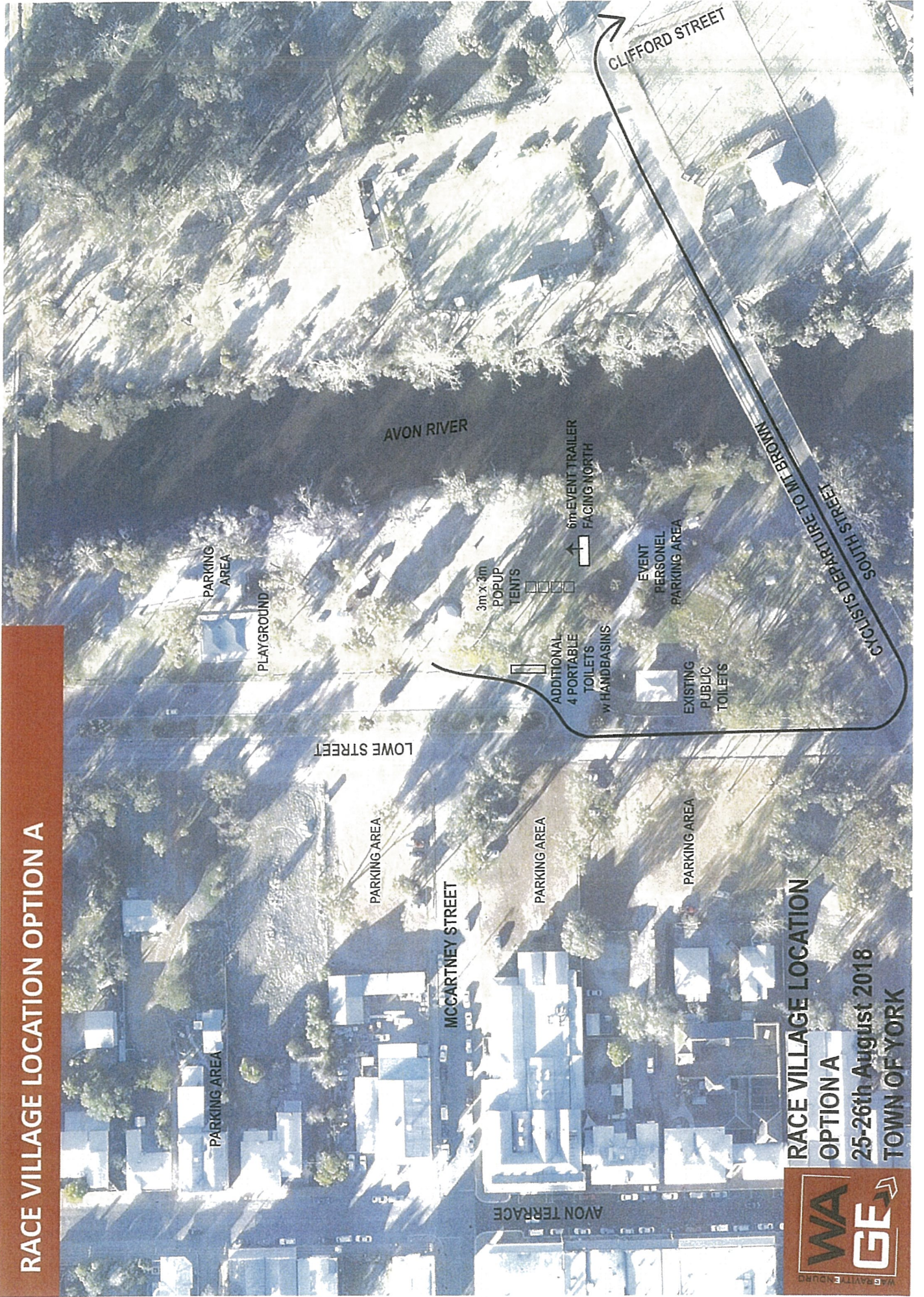
To ensure you have provided all of the relevant documents to the Shire of York, please check off the following list and submit this page with your application.

- Have you completed and attached the Event Application Form and **relevant** ground/s booking form?
- Do you need to submit an "Application to Construct a Public Building"? And if so, have you attached it to your application?
- Have you enclosed the relevant ground / venue hire fees?
- Have you attached a copy of your current Certificate of Currency? (including Public Liability)
- Have you attached a Site Plan (including parking provisions and directional Signage if required) and Layout of your event (including the inside layout if the event is being held inside a tent or marquee)?
- Have you attached a copy of your Evacuation Plan?
- Have you attached a plan showing the locations of fire safety equipment?
- Have you allowed for unobstructed emergency ambulance / fire access to the area?
- Have you obtained an "Electrical Compliance Certificate"?
- Have you submitted the Event Stallholder Application for food & non-food?
- Have you included information relating to the intended entertainment?
- Have you provided sufficient Toilets, First Aid, and Waste Disposal provisions in your planning? (please provide details)
- Have you provided advice of the timeframe for the event? (including bumping in and bumping out)
- Have you provided information relating to expected attendance?
- Have you attached a copy of your relevant Liquor Licence? (if applicable)
- Have you attached a copy of your Traffic Management Plan and/or Road Closures (if applicable)
- Have you attached a copy of your Fireworks approval? (if applicable)
- Have you attached a copy of your Risk Management Plan?
- Have the local Police been advised of your event (if more than 1,000 people are expected to attend)?
- Will the event require security personnel to be on-site?
- Do I need to advise nearby homes of any intended noise being emitted from loud speakers / music?
- Have you submitted your application for all your proposed signage and marketing items?
- Have you advised the York Hospital, St John's Ambulance and the Fire Department?

DRAFT COURSE MAP OVERVIEW



RACE VILLAGE LOCATION OPTION A

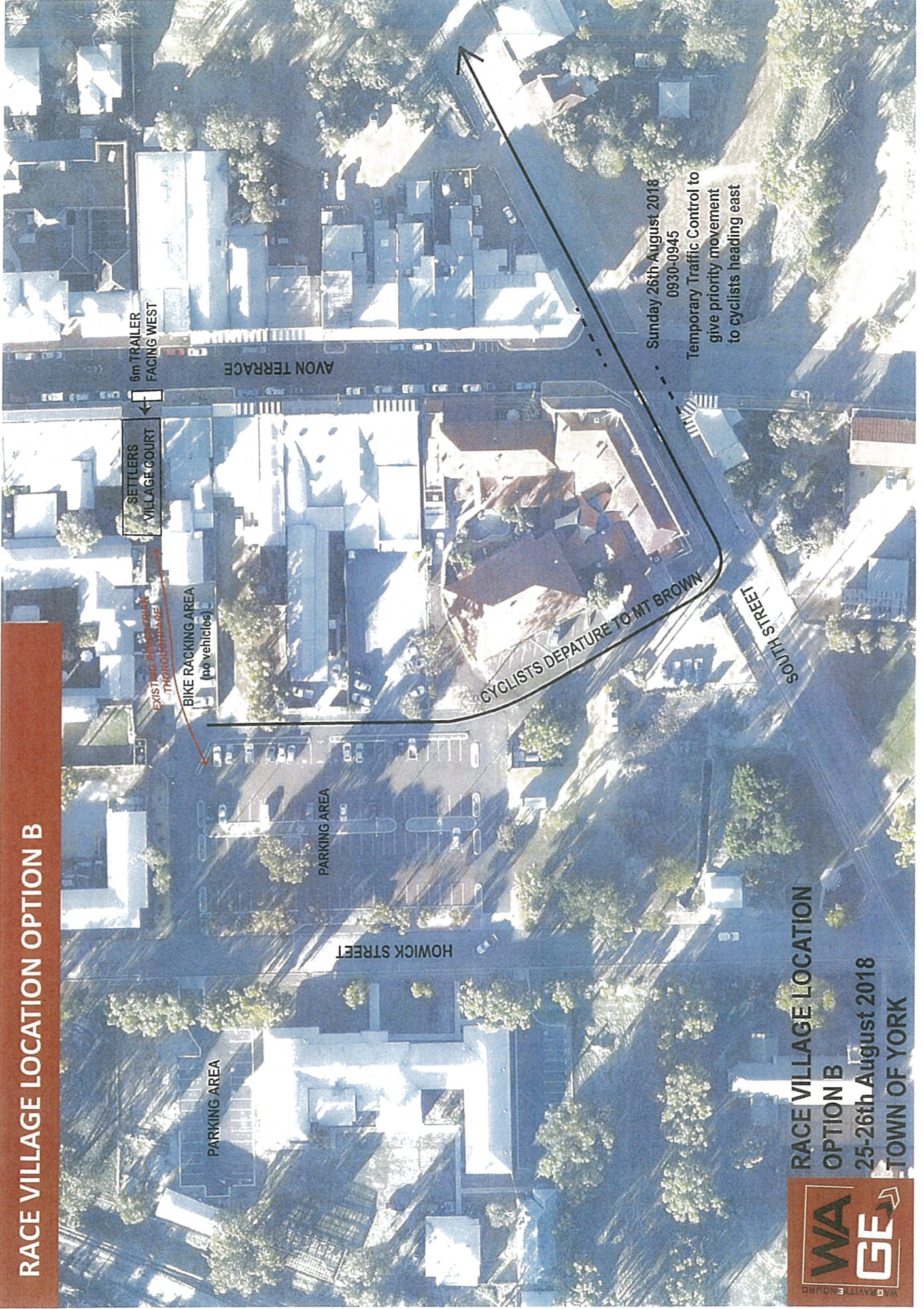


RACE VILLAGE LOCATION OPTION A

25-26th August 2018
TOWN OF YORK



RACE VILLAGE LOCATION OPTION B



RACE VILLAGE LOCATION
OPTION B

25-26th August 2018

TOWN OF YORK



OVERVIEW

WA Gravity Enduro PTY LTD are conducting a Gravity Enduro Mountain Bike Race on the 25th and 26th August 2018 for the WA Gravity Enduro Series Round 6 in conjunction with the MTBA National Gravity Enduro Series Round 2.

The mountain bike race takes place on Mt Brown in York for approximately 300 riders utilising all trails in the vicinity from 0600 to 1600. Riders will park their car at the Race Village and ride to and from Mt Brown following a short 900m ride along existing roads. Roads are considered very low traffic volume.

The Risk Management Plan has 7 columns:

Risk Identified	Description of risk
Consequence	Consequence of an occurrence (Scale at Annex A)
Likelihood	Evaluation of likelihood of occurrence (Scale at Annex B)
Level of Risk	Function of consequence and likelihood of risk (Scale at Annex C)
Risk Priority	Priority of risk (Scale at Annex C)
Risk Management	Actions to be undertaken to mitigate risk
Responsibility	Person responsible for risk treatment actions prior to event (List at Annex D)

RISK MANAGEMENT PLAN

Risk Identified	Consequence (1-5)	Likelihood (1-5)	Level of Risk	Risk Priority (A-E)	Risk Management	Responsibility
	(a)	(b)	(a x b)			
Financial loss incurred due to: e.g. event cancellation or insufficient number of participants	2	1	Neg	D	<ul style="list-style-type: none"> WA Gravity Enduro PTY LTD (WAGE) closes registrations for the event a week prior to the event taking place. This allows appropriate time to reschedule or refund should insufficient numbers take part. 	Race Director
Claims made against Stakeholder, MTBA, participants or local government for incidents which occur on days of event	1	1	Neg	E	<ul style="list-style-type: none"> WAGE will work with all relevant bodies if a claim is lodged. 	Race Director
Extreme heat on morning of event (over 35 degrees)	3	2	Low	B	<ul style="list-style-type: none"> This event takes place in Winter. Water is provided at the race village and at the top of Mt Brown, which is in very close proximity to the racing trails. 	Race Director, course marshal, volunteers, riders

Other extreme conditions on day of event (torrential rain fall, heavy winds, etc.)	3	2	Low	A	<ul style="list-style-type: none"> Race will be postponed, or a section of the course will only be raced, where an oversupply of marshals will be positioned to ensure rider safety. 	Race Director, Marshal Coordinator
Other injury/accident during event or training sessions (eg participant falls from bike)	3	3	Sig	A	<ul style="list-style-type: none"> 4wd vehicle always on standby for collection and delivery of injured rider to nearest medical (if occurs outside of paramedics on-site). Paramedics on-site 15mins before, during race and 15mins after race. 	Race Director, Marshal, Paramedics, Rider
Heat Exhaustion & Dehydration	3	2	Low	C	<ul style="list-style-type: none"> This event takes place in Winter. Paramedics on-site 15mins before, during race and 15mins after race. Free water made available. Race is held in the late afternoon to avoid heat. 	Race Director, Marshal, Paramedics, Rider
Medical emergency (participant experiences severe chest pains, etc.)	4	3	Sig	A	<ul style="list-style-type: none"> Race stops. Marshal locates rider and notifies race director of location using grid on course map. Paramedics notified and attend to injured rider. Race Director gives mobile phone number for immediate emergency contact. 	Race Director, Marshal, Paramedics, Rider
Communications equipment failure	2	2	Low	D	<ul style="list-style-type: none"> Mobile phone is first preference. If failure occurs, 3W hand held radio used for Communication. 	Race Director, Marshal.
Unaccounted riders	2	2	Low	D	<ul style="list-style-type: none"> WAGE's timing system allows us to quickly identify and keep track of competitors who have not returned to the race village. We can cross check their names with their phone number and call them directly. 	Race Director, Marshal, Rider
Damage to the environment	2	2	Low	D	<ul style="list-style-type: none"> WAGE is working with the landowner to ensure no damage is done to the environment 	WAGE

ANNEX A: RISK CONSEQUENCE

Rating	Description	Remarks
1	Insignificant	<ul style="list-style-type: none"> a. no injuries or fatalities b. little community disruption c. no environmental or other damage
2	Minor	<ul style="list-style-type: none"> a. small number of injuries b. no fatalities c. only first-aid required d. some environmental or other damage (but not lasting)
3	Moderate	<ul style="list-style-type: none"> a. hospital treatment required b. no fatalities c. some community inconvenience d. some environmental damage (small long-term affect) e. other damage
4	Major	<ul style="list-style-type: none"> a. extensive injuries b. significant hospitalisation c. some services unavailable d. extensive environmental damage (long term affect) e. other extensive damage f. some community displacement
5	Severe	<ul style="list-style-type: none"> a. fatalities b. injuries and extended hospitalisation periods c. widespread community displacement d. extensive and widespread damage e. significant short or long term environmental damage

ANNEX B: RISK LIKELIHOOD

Rating	Scale	Criteria
1	Remote	<ul style="list-style-type: none"> a. Would only occur in highly exceptional circumstances b. An extremely remote chance of an occurrence
2	Unlikely	<ul style="list-style-type: none"> a. Not likely to occur b. A small, but remote chance of occurrence due to the circumstances or situations that could arise
3	Possible	<ul style="list-style-type: none"> a. Likely to occur at least once, but not expected to occur much more than this
4	Likely	<ul style="list-style-type: none"> a. Likely to occur more than once, but not an 'everyday' occurrence b. Preconditions will arise at times
5	Almost Certain	<ul style="list-style-type: none"> a. Will occur b. Circumstances are likely to arise often throughout the period which will provide the opportunity for the crystallisation of the risk c. Expect frequent/regular occurrences

ANNEX C: RISK LEVEL & RISK PRIORITY

RISK LEVEL

Consequence

	INSIGNIFICANT	MINOR	MODERATE	MAJOR	SEVERE
--	---------------	-------	----------	-------	--------

Likelihood

REMOTE	Negligible	Negligible	Low	Low	Significant
UNLIKELY	Negligible	Low	Low	Significant	Significant
POSSIBLE	Low	Low	Significant	Significant	High
LIKELY	Low	Significant	Significant	High	High
ALMOST CERTAIN	Significant	Significant	High	High	Extreme

RISK PRIORITY

Description	Priority Ranking
Extreme	A
High	B
Significant	C
Low	D
Negligible	E



Certificate of Affiliation

This is to certify that
WA Gravity Enduro PTY LTD

is a financial, affiliated Private Promoter of MTBA

Expiry Date: 10/02/2019

Private Promoter Charter

1. You are bound to the MTBA rules and regulations as set down from time to time;
2. Your administration and activities will be conducted with due regard to our members;
3. Your activities will be conducted with sensitivity to the environment; and
4. Active steps will be taken to ensure that all your activities are risk managed;

Certified by:

Shane Coppin (Executive Officer)

Date of Issue: 6/03/2018

Club ID: 319

MTBA
PO Box 377
Varsity Lakes QLD 4227

email: admin@mtba.asn.au
Web: mtba.asn.au

LIU Certificate of Currency



Liberty
International
Underwriters

LIU
Certificate of Currency

Primary Liability Insurance Certificate of Currency

This Certificate:

- Is issued as a matter of information only and confers no rights upon the holder.
- Does not amend, extend or alter the coverage afforded by the Policy(ies) listed.
- Is only a summary of the cover provided.
- Reference must be made to the current Policy wording for full details.
- Is current at the date of issue only.

This certificate confirms that the under mentioned Policy is effective in accordance with the details shown:

Insured: Mountain Bike Australia, including all State / Territory Associations, affiliated clubs, financial members, temporary members (for events), officials, accredited coaches, event promoters and race directors, executives and volunteers.

Affiliated Private

Promoter: WA Gravity Enduro Pty Ltd

Event Name: WA Gravity Enduro Round 4 - Pemberton

Event Date/s: 25-26 August 2018

MTBA Affiliation Expiry: 10/02/2019

Interested Party/ies: WA Gravity Enduro Pty Ltd

Policy Number: SY-CAS-17-402116

Period of Insurance: From: 30 November 2017
To: 30 November 2018
Both dates 4:00pm local standard time

Insured business: The principal activities of Mountain Bike Australia include but are not limited to:

Mountain Bike Australia is the peak body for mountain biking in Australia. They aim to lead the development and promotion in Australia for the benefit and enjoyment of all mountain bikers. They do this by:



LIU THE PEOPLE. THE PRODUCTS. THE CAPACITY.™

Liberty

LIU

Liberty Mutual

This Certificate and the documents which it includes by reference are provided solely for the prospective insured named in this Certificate and may not be relied on in whole, or in part, by any other person or entity. The information in this Certificate is confidential and is intended for the use of the individual or entity named above. If you have received this communication in error, please notify us immediately by telephone 02 8298 5800 and return or securely destroy the Certificate and any enclosed documents. Thank you.

LIU Certificate of Currency



LIU
Certificate of Currency

1. Providing services, trail advocacy and communications of value to our members to enable them to enjoy mountain biking.
2. Promoting, developing and advocating mountain biking as a healthy sporting and recreational pastime.
3. Fostering and maintaining constructive relationships with cycling organisations and key stakeholders.
4. Providing a safe and fair environment for competitive mountain biking, appropriate and relevant to the various levels across the sport.
5. Managing and governing the organisation in a transparent, financially responsible and sustainable manner.

Activities which are authorised or sanctioned by the Insured including:

1. Administration, meetings, official functions, events and competitions
2. Participating in organised social or fundraising activities of the Insured.
3. Authorised voluntary work on behalf of the Insured.
4. For registered athletes, benefits are applicable to Injury & Property Damage occurring during any and all bike riding activities 24 hrs a day,
5. Travelling directly to or from or between activities described in 1 to 4 above and the Insured Person(s) Normal Place of Residence or place of employment.

Limit of Indemnity: AUD20,000,000 any one Occurrence in respect of public liability and in the aggregate during the Period of Insurance in respect of Product liability.

Sub-limit of Indemnity: AUD5,000,000 any one Claim and in the aggregate for all Claims made during the Period of Insurance in respect of Sports Errors & Omissions.



For and on behalf of
Liberty International Underwriters

22 May 2018
Date

Liberty International Underwriters is a trading name of Liberty Mutual Insurance Company (ABN 086 083 605). Incorporated in Massachusetts, U.S.A. (The liability of members is limited).



LIU THE PEOPLE. THE PRODUCTS. THE CAPACITY.™

Liberty

LIU

Liberty Mutual

This Certificate and the documents which it includes by reference are provided solely for the prospective insured named in this Certificate and may not be relied on in whole, or in part, by any other person or entity. The information in this Certificate is confidential and is intended for the use of the individual or entity named above. If you have received this communication in error, please notify us immediately by telephone 02 8298 5800 and return or securely destroy the Certificate and any enclosed documents. Thank you.

The propose date for York CX (cyclocross) is Sunday the 19th August, timing schedule below..

I have attached a number of race maps to assist.

Basically for us to run it in the location as discussed along Avon Tce between South Street and the visitor centre and down to the river on Stephen Street then back up South Street.

At this stage we would prefer to set up race administration near the Imperial Hotel if possible and have that serve our our main base for the weekend.

All we really require would be about 150 crowd control barriers (~2,200mm wide 1,100mm tall) and road closures for the Sunday from 9-4.

RACE SCHEDULE

Course Open for practice

9:30 - 10:45

Kids Race U13 whole course

11:00 (20 mins)

U9 partical course

11:00 (20 mins)

Course modification

11:30

Mens C, Mens Masters C and Mens Open

12:00 (30 mins)

Mens B, Mens Masters B

12:50 (40 mins)

Womens Elite

13:45 (45mins)

Womens B 13:45 (40 mins)

Womens C 13:45 (30 mins)

Mens Elite 14:45 (50 mins)

Pack Up 1550-1625

Presentations 1630

This will be the 7th and last of the CX races in Perth for the Western Australian Cyclocross 2018 season, and the series trophies will be handed out, the Mens Numbat Cup and the Ladies Numbat Plate in the elite categories. We generally have 120 riders across the four adult race time slots and would expect this to continue.

We are generally self funding via race fees of between \$20-25 per race and if we are able to utilise the councils toilets this will help to keep the fee to \$20. If the council is able to fund the CCB's and road closures this will greatly assist WACX in organising a CX race in York.

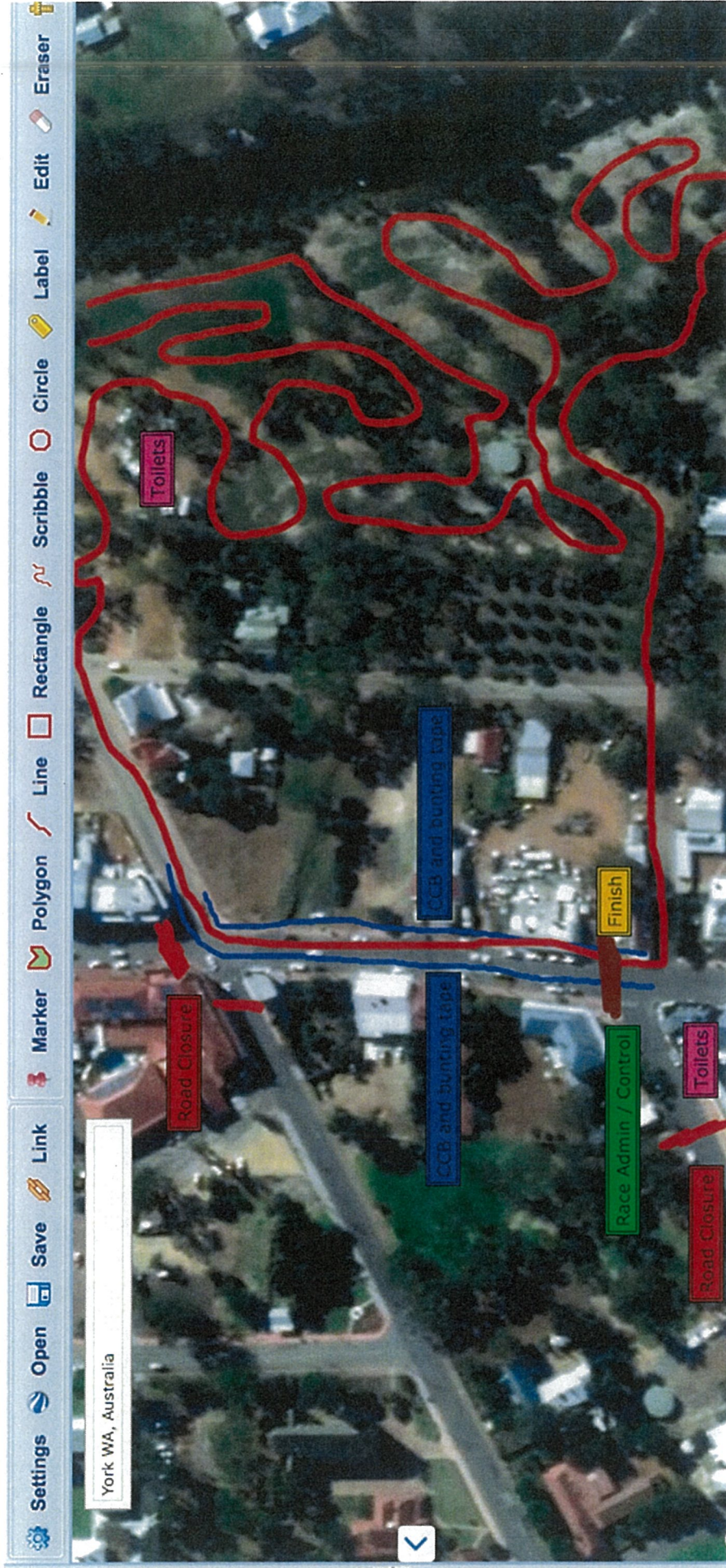
As it is the last race of the season i would like to turn it into a weekend for those that can stay saturday night after course set up and we will organise a little knees up at a local establishment (any recommendations, for 20-30 people?) and a few before and after drinks a local establishment or two. Hopefully this is what you require, please call me on 0408 872 078 if you require any further information.

I have attached our \$20M public liability cert and a current risk matrix.

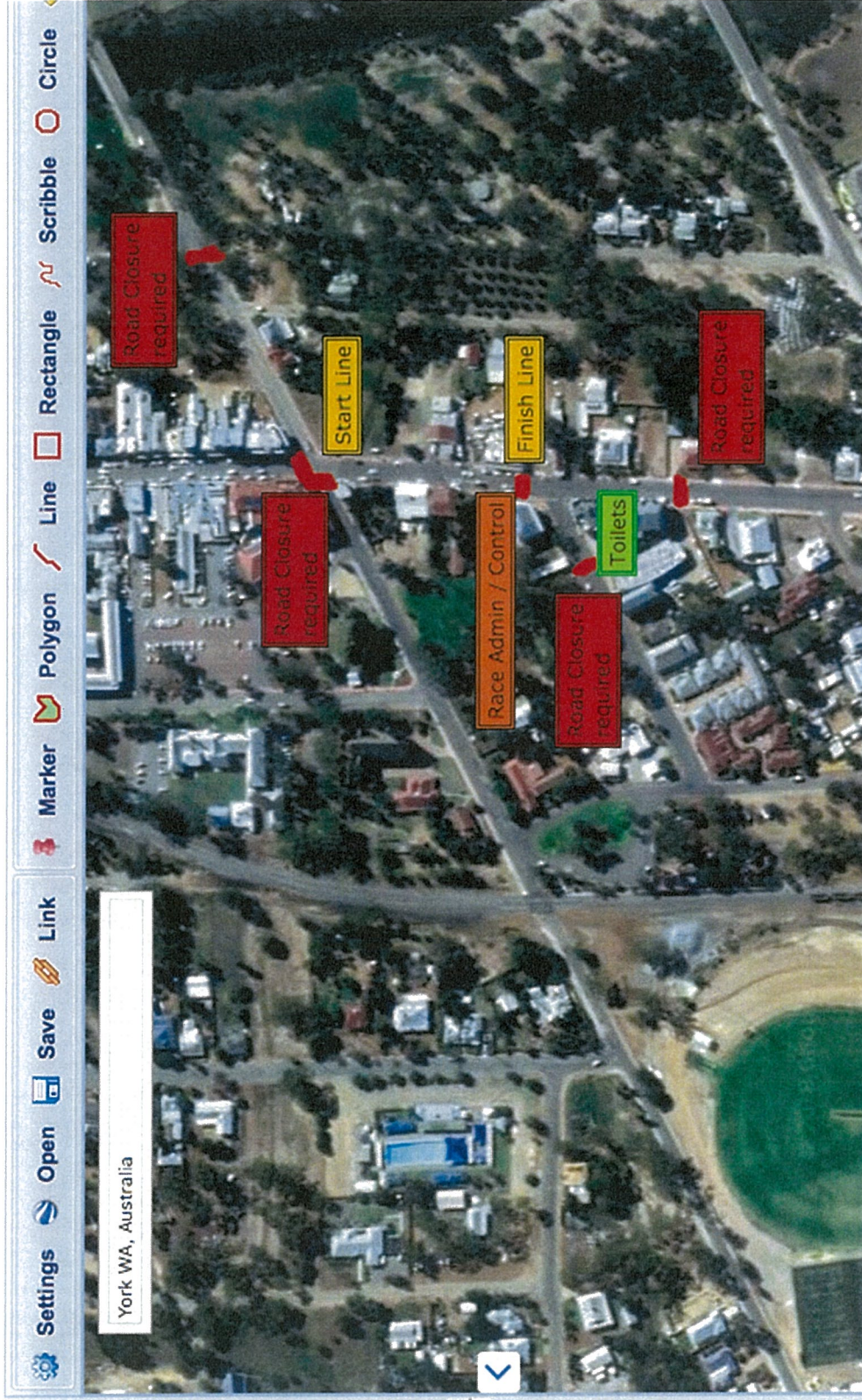
Many thanks,

Stuart Carson.

Picture 3, Crowd Control Barrier location (with bunting tape supplied by WACX)



Picture 2, proposed road closures



Perth Mountain Bike Club
Numbat Cup
Cyclocross
2018

RISK MANAGEMENT PLAN

OVERVIEW

Perth Mountain Bike Club conduct Cyclocross events in Western Australia, mostly in the Perth metro area. Parks have been booked for use by the club to host races. Upto 150 riders utilising the cyclocross course which will be constructed the morning of the race. Riders and Spectators will arrive at the venue by bike or car.

The Risk Management Plan has 7 columns:

Risk Identified	Description of risk
Consequence	Consequence of an occurrence (Scale at Annex A)
Likelihood	Evaluation of likelihood of occurrence (Scale at Annex B)
Level of Risk	Function of consequence and likelihood of risk (Scale at Annex C)
Risk Priority	Priority of risk (Scale at Annex C)
Risk Management	Actions to be undertaken to mitigate risk
Responsibility	Person responsible for risk treatment actions prior to event (Persons identified in event Management Plan)

RISK MANAGEMENT PLAN

Risk Identified	Con sequence (1-5)	Likeli hood (1-5)	Level of Risk	Risk Priority (A-E)	Risk Management	Responsibility
	(a)	(b)	(a x b)			
Financial loss incurred due to: e.g. event cancellation or insufficient number of participants	1	3	Low	D	<ul style="list-style-type: none"> Nil, the event is supported by Perth Mountain Bike Club, allowing to keep overheads low. The event is aimed at participation and not profit. 	Event Director
Claims made against Perth Mountain Bike Club, MTBA, participants, or local government for incidents which occur on days of event	3	2	Low	D	<ul style="list-style-type: none"> All racers to operate under the direction of the chief commissaire MTBA or CA license required for all racers as per rules of cyclocross racing in australia 	<ul style="list-style-type: none"> Commissaire Event Director
Extreme conditions on day of event (torrential rain fall, heavy winds, etc.)	3	2	Low	D	<ul style="list-style-type: none"> Event will only be cancelled on advice from land manager. Event village relocated to area undercover. 	Commissaire
Medical emergency (participant experiences severe chest pains, etc.)	2	3	Low	D	<ul style="list-style-type: none"> St Johns Ambulance on site for event Event to stop on directions of medical personnel 	Event director St Johns Ambulance Commissaire
Spectators on course are injured in collision	3	2	Low	D	<ul style="list-style-type: none"> Spectator crossing points to be built on the course. Marshall on crossing duty 	Movement Coordinator
Damage to the environment	2	3	Low	D	<ul style="list-style-type: none"> Land manager to be advised of likely minor damage to grass. Repair work undertaken if required. 	Event Director

ANNEX A: RISK CONSEQUENCE

Rating	Description	Remarks
1	Insignificant	<ul style="list-style-type: none"> a. no injuries or fatalities b. little community disruption c. no environmental or other damage
2	Minor	<ul style="list-style-type: none"> a. small number of injuries b. no fatalities c. only first-aid required d. some environmental or other damage (but not lasting)
3	Moderate	<ul style="list-style-type: none"> a. hospital treatment required b. no fatalities c. some community inconvenience d. some environmental damage (small long-term affect) e. other damage
4	Major	<ul style="list-style-type: none"> a. extensive injuries b. significant hospitalisation c. some services unavailable d. extensive environmental damage (long term affect) e. other extensive damage f. some community displacement
5	Severe	<ul style="list-style-type: none"> a. fatalities b. injuries and extended hospitalisation periods c. widespread community displacement d. extensive and widespread damage e. significant short or long term environmental damage

ANNEX B: RISK LIKELIHOOD

Rating	Scale	Criteria
1	Remote	<ul style="list-style-type: none"> a. Would only occur in highly exceptional circumstances b. An extremely remote chance of an occurrence
2	Unlikely	<ul style="list-style-type: none"> a. Not likely to occur b. A small, but remote chance of occurrence due to the circumstances or situations that could arise
3	Possible	<ul style="list-style-type: none"> a. Likely to occur at least once, but not expected to occur much more than this
4	Likely	<ul style="list-style-type: none"> a. Likely to occur more than once, but not an 'everyday' occurrence b. Preconditions will arise at times
5	Almost Certain	<ul style="list-style-type: none"> a. Will occur b. Circumstances are likely to arise often throughout the period which will provide the opportunity for the crystallisation of the risk c. Expect frequent/regular occurrences

ANNEX C: RISK LEVEL & RISK PRIORITY

RISK LEVEL

Consequence

	INSIGNIFICANT	MINOR	MODERATE	MAJOR	SEVERE
REMOTE	Negligible	Negligible	Low	Low	Significant
UNLIKELY	Negligible	Low	Low	Significant	Significant
POSSIBLE	Low	Low	Significant	Significant	High
LIKELY	Low	Significant	Significant	High	High
ALMOST CERTAIN	Significant	Significant	High	High	Extreme

RISK PRIORITY

Description	Priority Ranking
Extreme	A
High	B
Significant	C
Low	D
Negligible	E

LIU Certificate of Currency



LIU
Certificate of Currency

Primary Liability Insurance Certificate of Currency

This Certificate:

- Is issued as a matter of information only and confers no rights upon the holder.
- Does not amend, extend or alter the coverage afforded by the Policy(ies) listed.
- Is only a summary of the cover provided.
- Reference must be made to the current Policy wording for full details.
- Is current at the date of issue only.

This certificate confirms that the under mentioned Policy is effective in accordance with the details shown:

Insured: Mountain Bike Australia, including all State / Territory Associations, affiliated clubs, financial members, temporary members (for events), officials, accredited coaches, event promoters and race directors, executives and volunteers.

Affiliated Club: Perth Mountain Bike Club

MTBA Affiliation Expiry: 18/08/2018

Policy Number: SY-CAS-17-402116

Period of Insurance: From: 30 November 2017
To: 30 November 2018
Both dates 4:00pm local standard time

Insured business: The principal activities of Mountain Bike Australia include but are not limited to:

Mountain Bike Australia is the peak body for mountain biking in Australia. They aim to lead the development and promotion in Australia for the benefit and enjoyment of all mountain bikers. They do this by:



LIU THE PEOPLE. THE PRODUCTS. THE CAPACITY.™

Liberty

LIU

Liberty Mutual

This Certificate and the documents which it includes by reference are provided solely for the prospective insured named in this Certificate and may not be relied on in whole, or in part, by any other person or entity. The information in this Certificate is confidential and is intended for the use of the individual or entity named above. If you have received this communication in error, please notify us immediately by telephone 02 8298 5800 and return or securely destroy the Certificate and any enclosed documents. Thank you.



SHIRE OF YORK ACQUITTAL FORM

Organisation Name: _____

Project Title: _____

Funding Type (please tick):

- COMMUNITY FUNDING: GRANTS & SPONSORSHIP (Policy C1.3)
 SPONSORSHIP OF TOURISM EVENTS (Policy C1.4)

DECLARATION:

I declare that the grant provided by the Shire of York has been spent in accordance with the purpose and conditions for which it was granted. The attached financial acquittal and project evaluation are a true and correct record of the transactions and outcomes of the project.

NAME _____

POSITION _____

ORGANISATION _____

SIGNATURE _____ DATE _____

ATTACHED:

- PART A - Evaluation Report
 PART B - Statement of Income and Expenditure
 Copies of Invoices / Evidence of Expenditure
 Evidence of project outcomes and acknowledgement of Shire of York

Please send the completed form to:
Community Economic Development Officer
Shire of York
PO Box 22, YORK WA 6302
records@york.wa.gov.au

PART A – EVALUATION REPORT

Was the project implemented as per your application? If not what, changes were made and why?

Please describe the key outcomes of your project:

How many people benefited from your project and in what way?

How was the Shire of York acknowledged throughout this project?

PART B – STATEMENT OF INCOME AND EXPENDITURE

Please list the income and expenditure relating to your project and return within four weeks of the project’s completion with a copy of invoices to:

INCOME	BUDGET (\$)	ACTUAL (\$)
SOURCES		
SHIRE OF YORK		
OWN SOURCE		
OTHER SOURCES (please specify)		
EXPENDITURE	BUDGET (\$)	ACTUAL (\$)
ITEM (e.g. equipment, advertising, contractors)		

- Auditor’s certification is required for grants/sponsorships of \$10,000 or more
- Funds which are unspent for the term and purpose that they were approved for must be returned to the Shire within 30 days of the completion of the project, activity or event. Failure to satisfactorily complete the performance evaluation and acquittal may disqualify recipients from further grants or financial assistance from the Shire of York.

