



LG Ref: P899
DoP Ref: DP/14/00039
Enquiries: Development Assessment Panels
Telephone: (08) 6551 9919

State Administrative Tribunal
contact@sat.justice.wa.gov.au

Dear Sir/Madam,

State Administrative Tribunal Review Outcome – DR 127 of 2014
Lots 4869, 5931, 9926 & 26932 (2948) Great Southern Highway, Saint Ronans
Construction and use of Allawuna Farm for the purposes of a Class II landfill

Please be advised that the Mid-West/Wheatbelt Joint Development Assessment Panel reconsidered the abovementioned development application pursuant to section 31 of the *State Administrative Tribunal Act 2004* on 31 August 2015.

The Notice of Determination is attached.

Sean O'Connor

Yours sincerely,

DAP Secretariat

4/09/2015

Enc: Amended DAP Determination Notice

cc: Mr Michael Voros
SITA Australia Pty Ltd

State Solicitor's Officer
GPO Box F317
PERTH WA 6001

Ms Jacky Jurmann
Shire of York





Planning and Development Act 2005

Shire of York Town Planning Scheme No.2

Mid-West/Wheatbelt Joint Development Assessment Panel

Determination on Development Assessment Panel Application for Planning Approval

Location: Lots 4869, 5931, 9926 & 26932 (2948) Great Southern Highway, Saint Ronans

Description of proposed Development: Construction and use of Allawuna Farm for the purposes of a Class II landfill

Pursuant to section 31 of the *State Administrative Tribunal Act 2004*, the Mid-West/Wheatbelt Joint Development Assessment Panel, at its meeting on 31 August 2015, reconsidered its decision dated 14 April 2014 with respect to the above application, SAT Ref. DR 127 of 2014 and has resolved to:

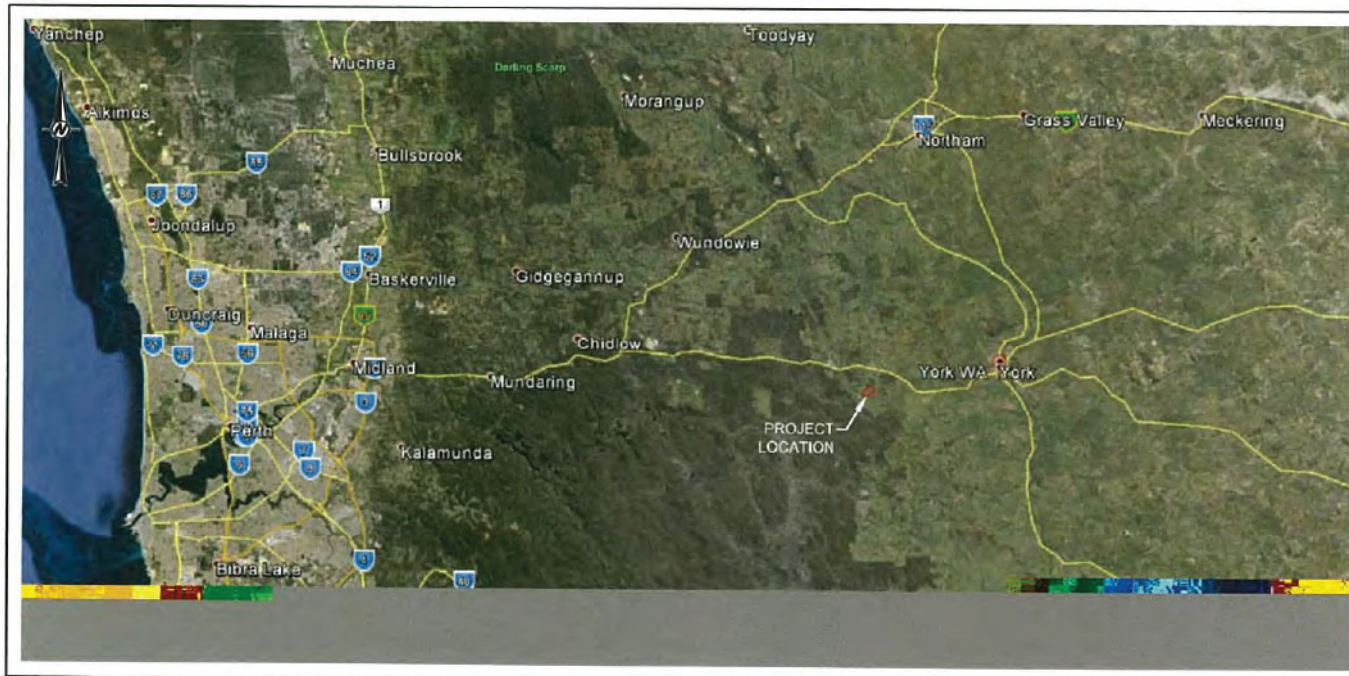
Reaffirm its decision dated 14 April 2014 and **refuse** DAP Application reference DP/14/00039 and amended plans D001 to D012 in accordance with Clause 8.6 of the Shire of York's Town Planning Scheme No. 2, for the following reasons:

Reasons

1. The proposed landfill is not permitted in the General Agriculture zone given that the proposal is not consistent with the objectives and purpose of the zone in accordance with Clause 3.2.4(c) of the York Town Planning Scheme No. 2.
2. The proposed landfill presents potential for incremental, permanent loss of agricultural land, as a result of a temporary land use, in a district where expansion of agricultural land is already constrained by salinity and vegetation protection and is not consistent with Clause 4.15.1(a) of the York Town Planning Scheme No. 2.
3. The applicant has failed to demonstrate that the proposed landfill will be of benefit to the district, which is inconsistent with Clause 4.15.1(b) of the York Town Planning Scheme No. 2.
4. The application does not include sufficient information to demonstrate that visual impacts will not affect the amenity of the locality and residents, as required by Objective (b) (Clause 1.7) and Clause 8.5 (i), (j) and (n) of the York Town Planning Scheme No. 2.
5. The proposed landfill is ad-hoc and is not consistent with the requirements of orderly and proper planning, as required by Clause 8.5(b) of the York Town Planning Scheme No.2.



SITA AUSTRALIA ALLUWUNA FARM LANDFILL
LOTS 4869, 5931, 9926 & 26934
GREAT SOUTHERN HIGHWAY, SAINT RONANS
APPLICATION FOR PLANNING CONSENT
SHIRE OF YORK TPS No.2



PROJECT LOCALITY PLAN
NOT TO SCALE

DRAWING SCHEDULE		
DRAWING No.	DESCRIPTION	REVISION
D001	COVER SHEET	A
D002	SITE PLAN	A
D003	LANDFILL CELL LAYOUT PLAN	A
D004	LANDFILL ULTIMATE TOP OF WASTE	A
D005	LANDFILL CELL 1 AND 2 LAYOUT PLAN	A
D006	LANDFILL INFRASTRUCTURE LAYOUT PLAN	A
D007	TYPICAL SECTIONS	A
D008	TYPICAL SECTION AND DETAILS	A
D009	LANDFILL DETAILS	A
D010	SUBROW AREA LOCATIONS PLAN	A
D011	WEIGHBRIDGE DETAILS	A
D012	SITE BUILDING CONCEPTS	A

NOTES:

- THESE NOTES APPLY TO ALL PROJECT DRAWINGS IN THE SET UNLESS NOTED OTHERWISE AND SHALL BE READ IN CONJUNCTION WITH THE SPECIFICATION.
- ALL LEVELS ARE IN METRES TO AUSTRALIAN HEIGHT DATUM (AHD).
- ALL CO-ORDINATES ARE IN METRES TO MAP GRID AUSTRALIA (MGA 94, ZONE 55).
- ALL DIMENSIONS ARE IN MILLIMETRES UNLESS NOTED OTHERWISE.
- DIMENSIONS AND LOCATION OF EXISTING STRUCTURES SHALL BE CONFIRMED ON SITE BY THE CONTRACTOR PRIOR TO COMMENCEMENT OF WORKS.
- LOCATION AND DEPTH OF ALL SERVICES TO BE VERIFIED BY THE CONTRACTOR PRIOR TO COMMENCEMENT OF WORKS.
- DIMENSIONS SHALL NOT BE SCALED OFF DRAWINGS.
- DRAWING MUST BE PRINTED IN COLOUR TO CORRECTLY IDENTIFY ALL DESIGN ELEMENTS.

REFERENCE:

BASE MAP SOURCED FROM NEARMAP WEB SITE <http://maps.au.nearmap.com>, ACCESSED 27.01.2015

NOT FOR CONSTRUCTION

RAR -
ATTACHMENT 1

CLIENT
SITA AUSTRALIA

CONSULTANT



PERTH OFFICE
LEVEL 3, HAVELOCK STREET
WEST PERTH, WA 6155
AUSTRALIA
(+61) (8) 9213 7600
www.golder.com

PROJECT
ALLUWUNA FARM LANDFILL

TITLE
COVER SHEET

PROJECT No.
147645033

DOCUMENT NO.
PLANNING - FEB 2015

Rev. A 1 of 12

FIGURE
D001

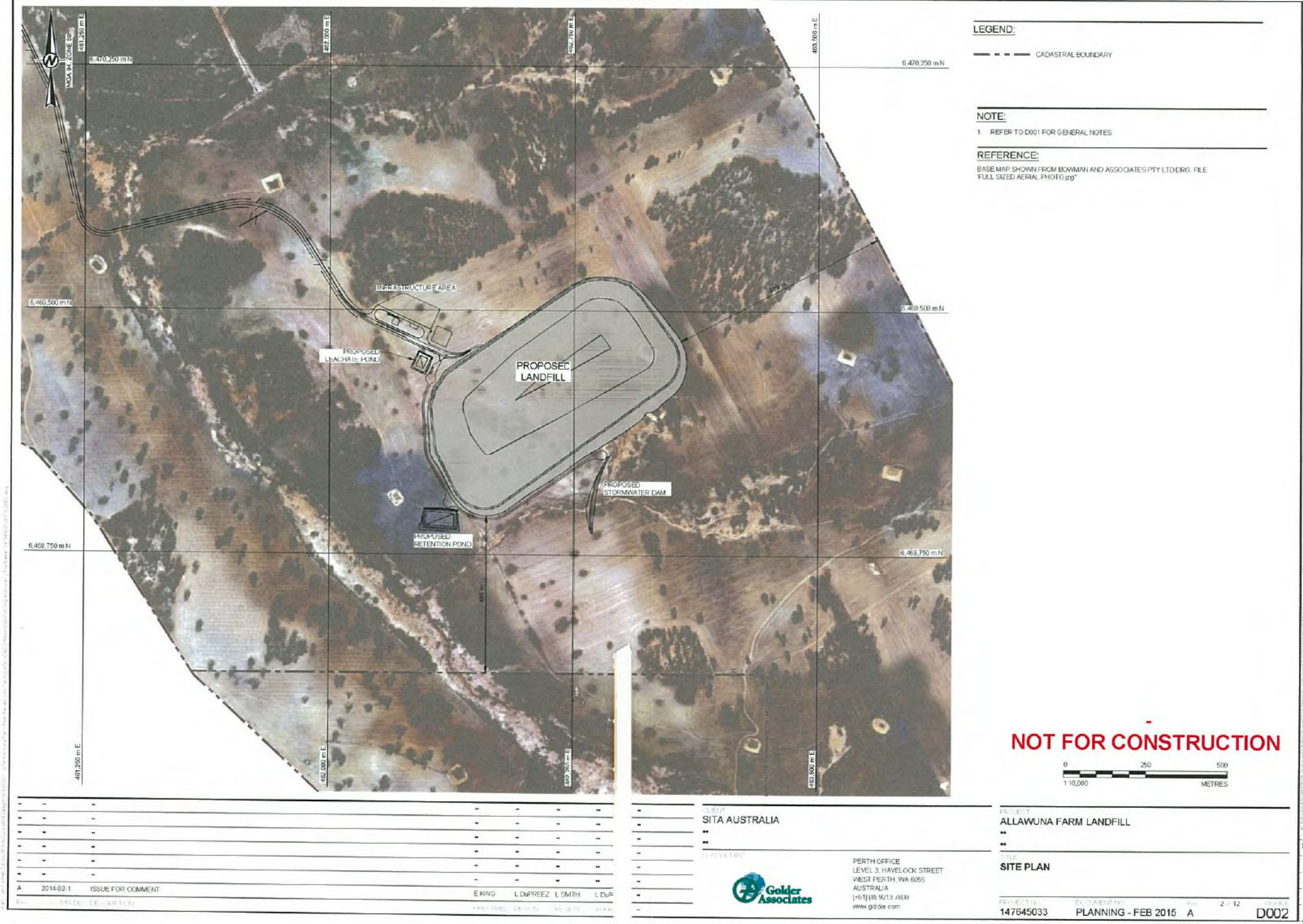
A 2014-02-1 ISSUE FOR COMMENT

Rev. 11/11/14-00 DESCRIPTION

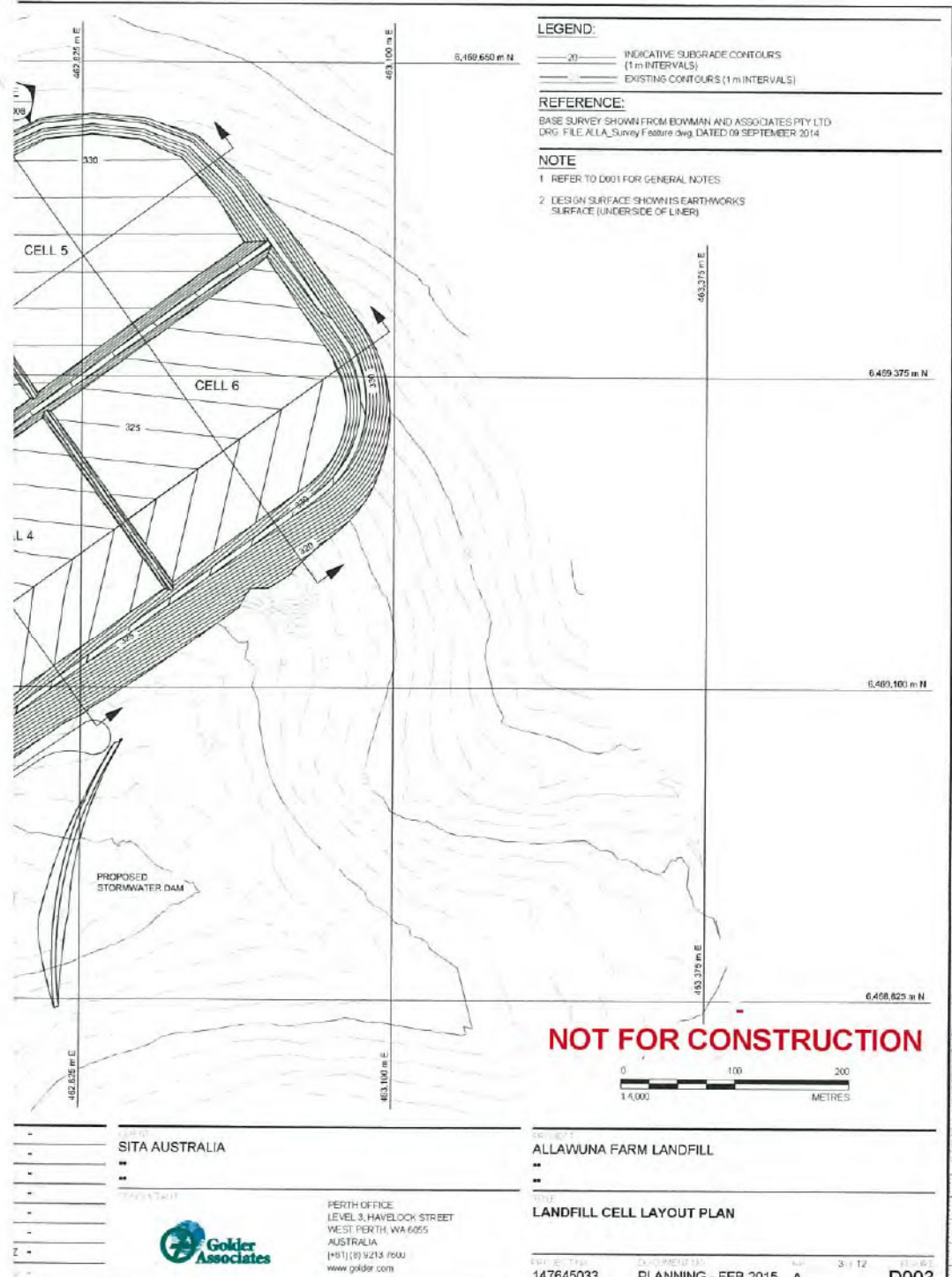
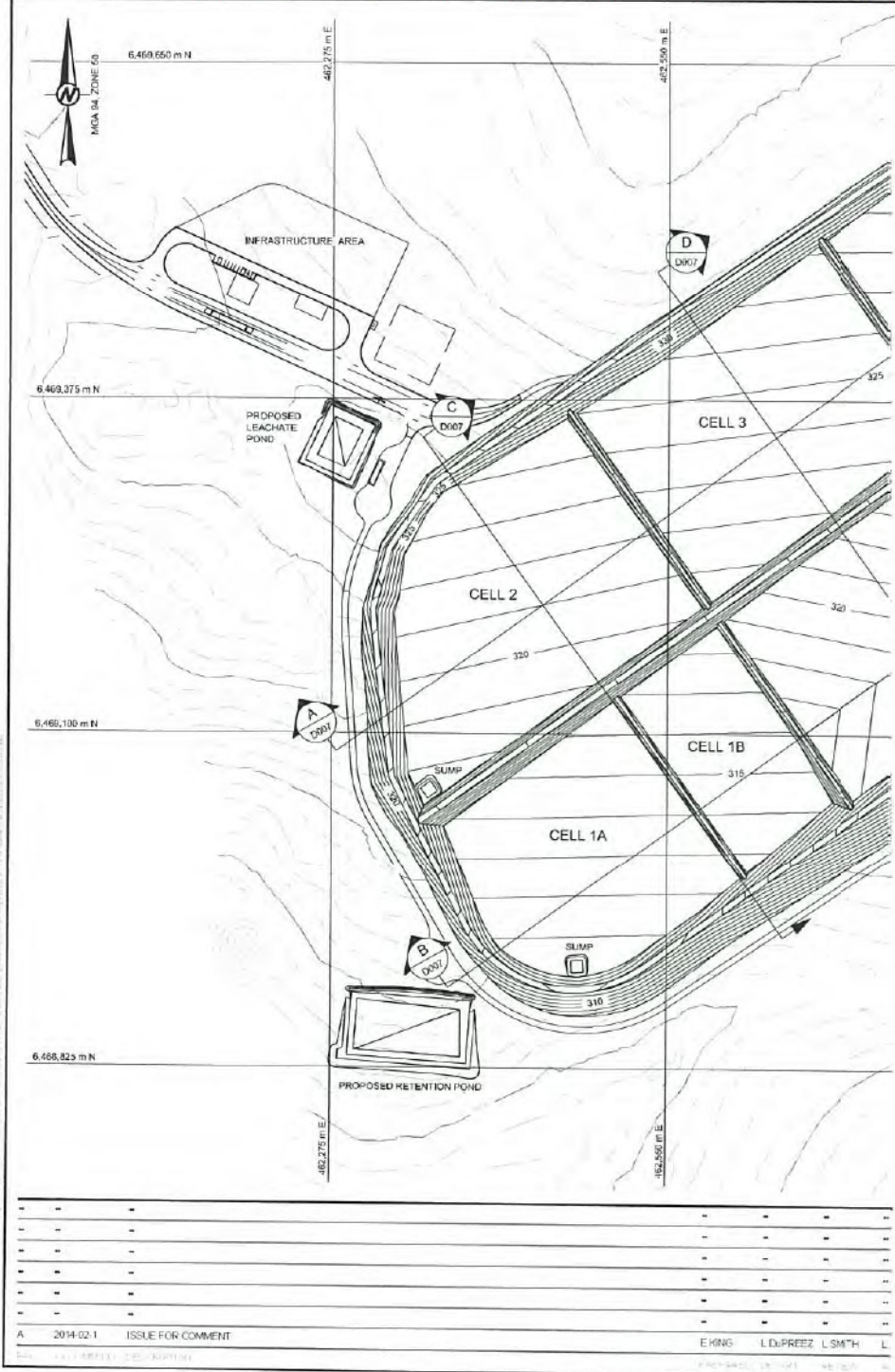
E.KING L.DUPREEZ L.SMITH L.DUPREEZ

PREPARED DESIGN REVIEW APPROVAL

DEVELOPMENT ASSESSMENT PANELS REFUSED 31 AUGUST 2015



DEVELOPMENT ASSESSMENT PANELS REFUSED 31 AUGUST 2015



NOT FOR CONSTRUCTION



SITA AUSTRALIA

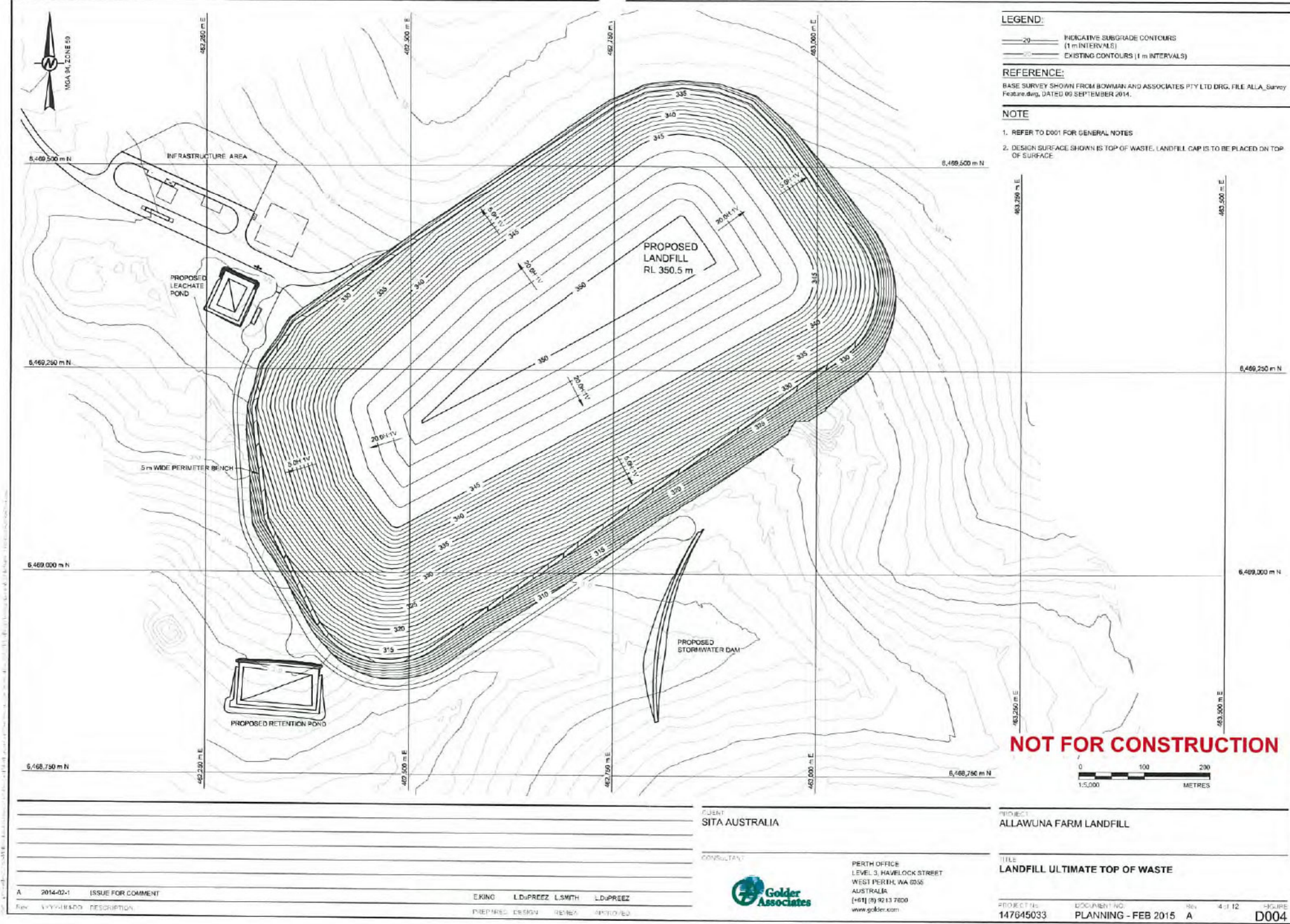


PERTH OFFICE
LEVEL 3, HAYLOCK STREET
WEST PERTH, WA 6005
AUSTRALIA
(+61) (0) 9 213 7600
www.golder.com

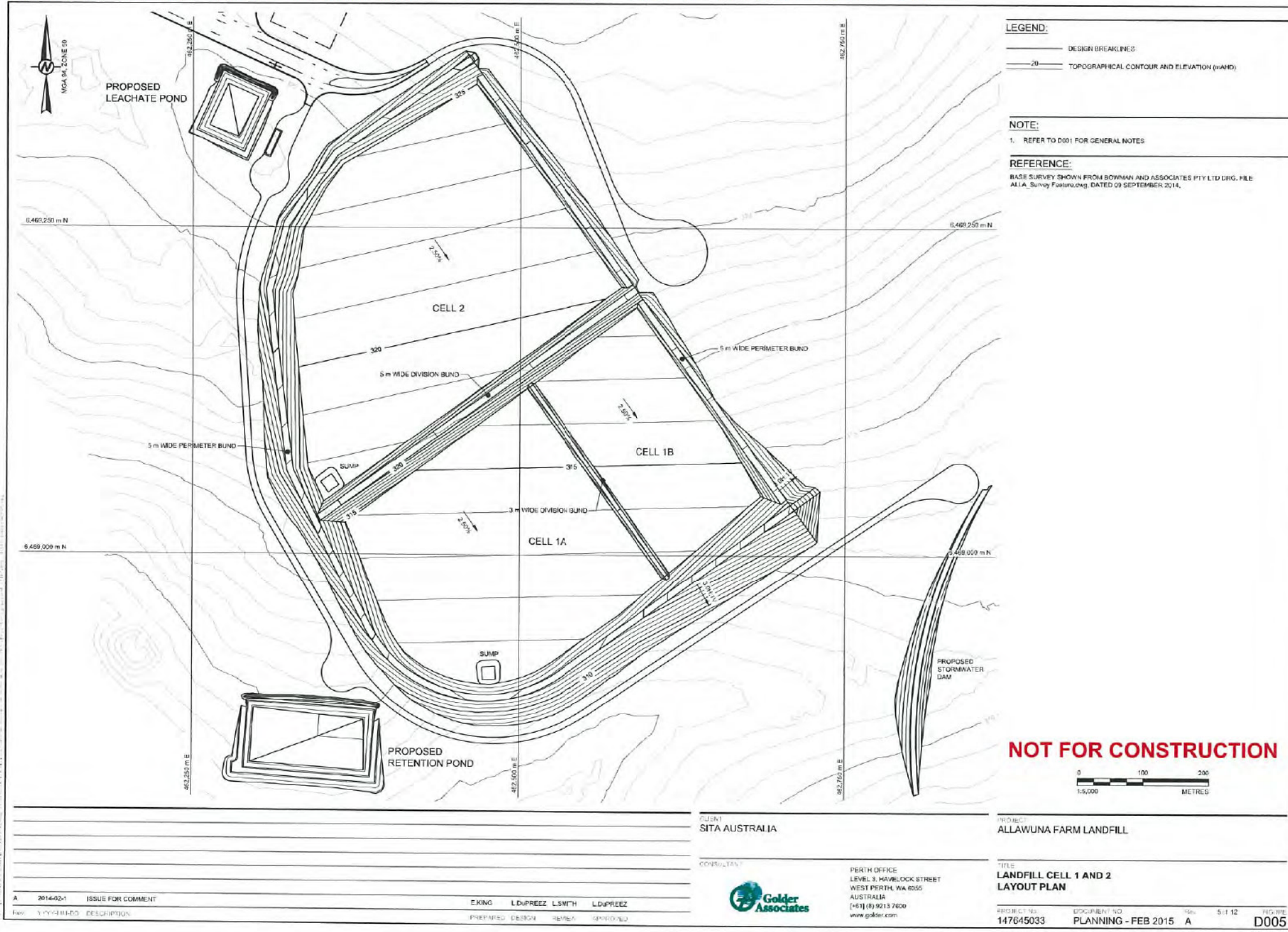
ALLAWUNA FARM LANDFILL

LANDFILL CELL LAYOUT PLAN

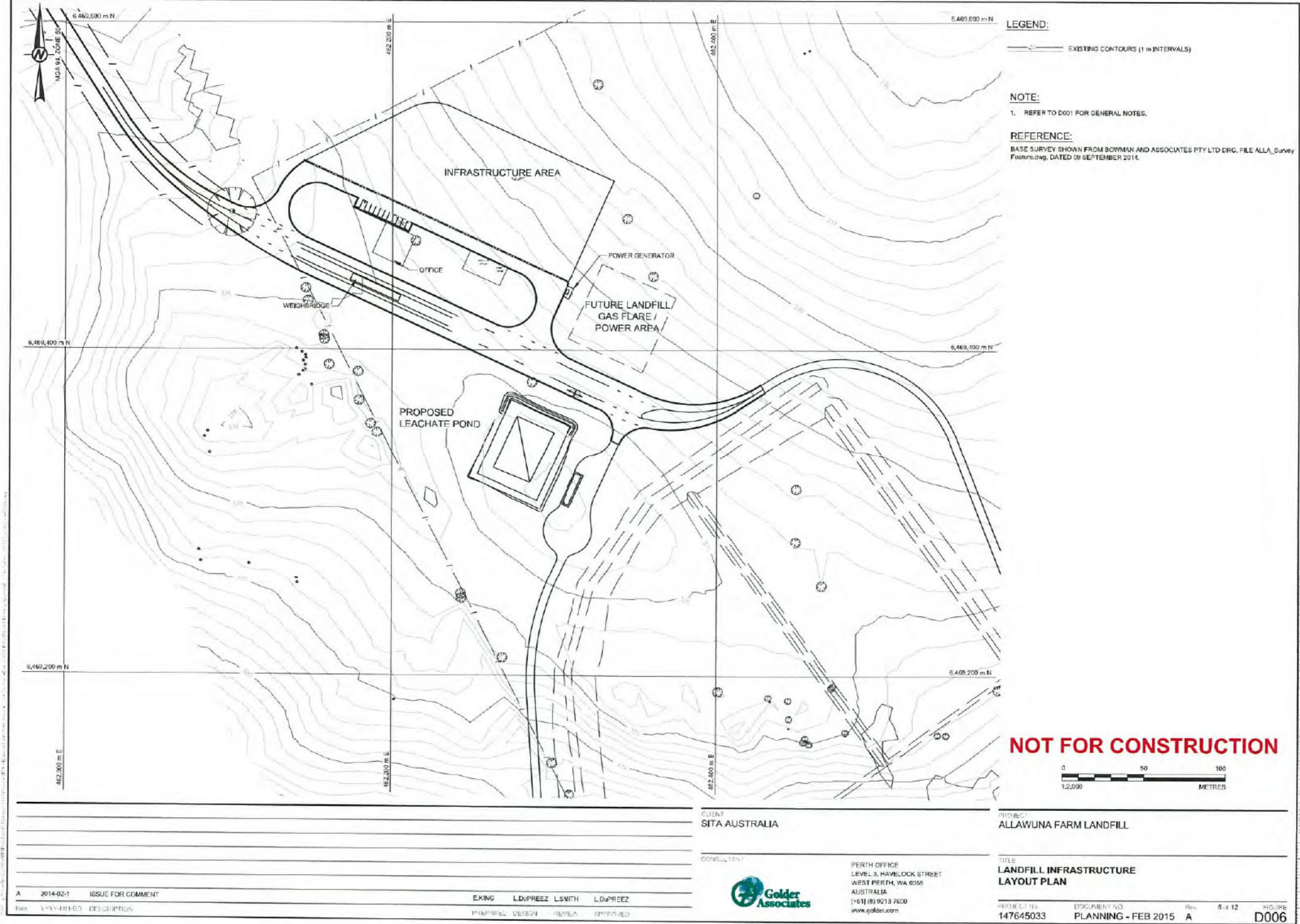
DEVELOPMENT ASSESSMENT PANELS REFUSED 31 AUGUST 2015



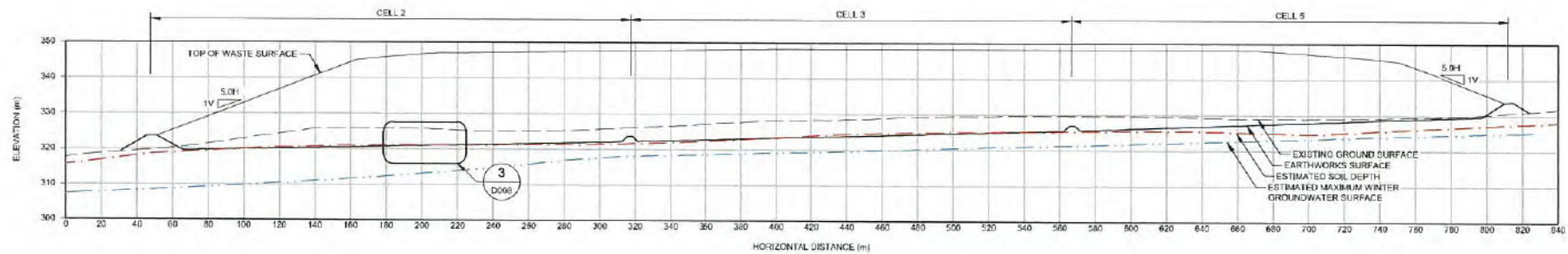
DEVELOPMENT ASSESSMENT PANELS REFUSED 31 AUGUST 2015



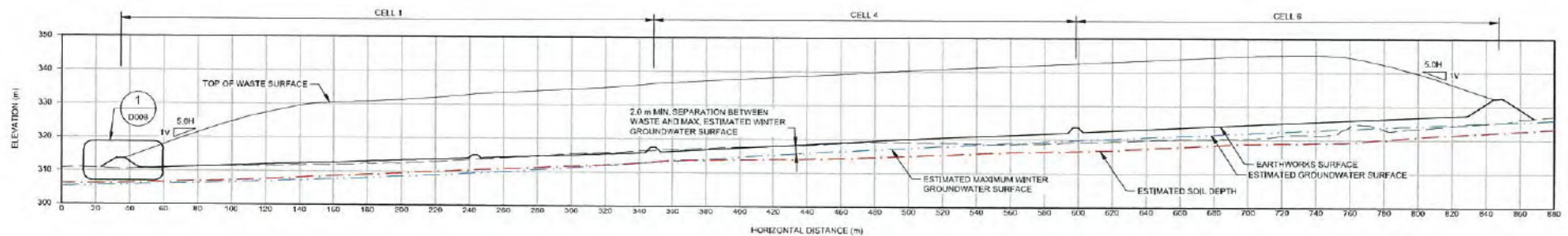
DEVELOPMENT ASSESSMENT PANELS REFUSED 31 AUGUST 2015



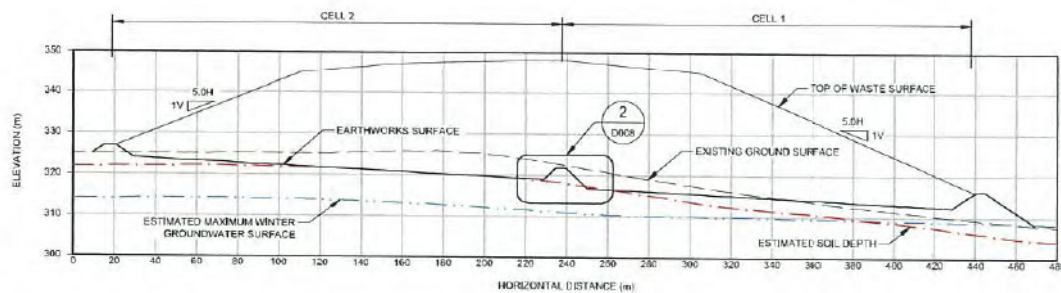
DEVELOPMENT ASSESSMENT PANELS REFUSED 31 AUGUST 2015



HOR. SCALE 1:2,500
VERT. SCALE 1:1,250
A SECTION
D003

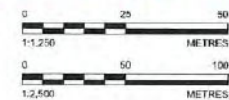


HOR. SCALE 1:2,500
VERT. SCALE 1:1,250
B SECTION
D003



HOR. SCALE 1:2,500
VERT. SCALE 1:1,250
C SECTION
D003

NOT FOR CONSTRUCTION



CLIENT
SITA AUSTRALIA

PROJECT
ALLAWUNA FARM LANDFILL

CONSULTANT



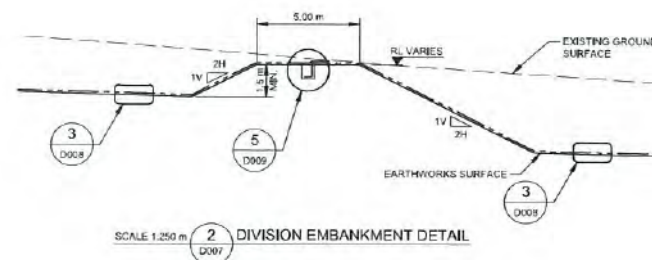
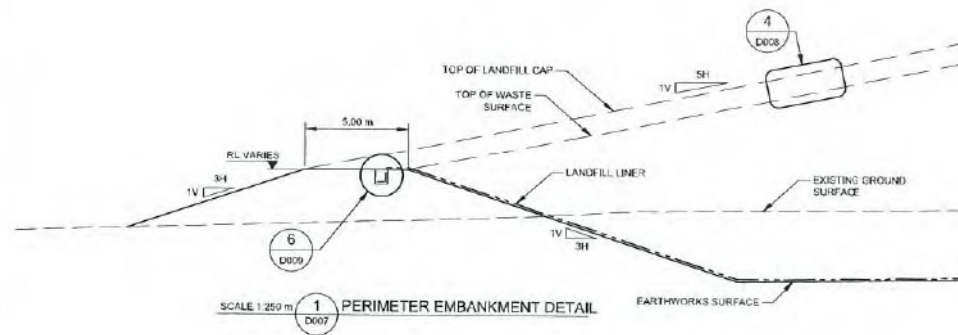
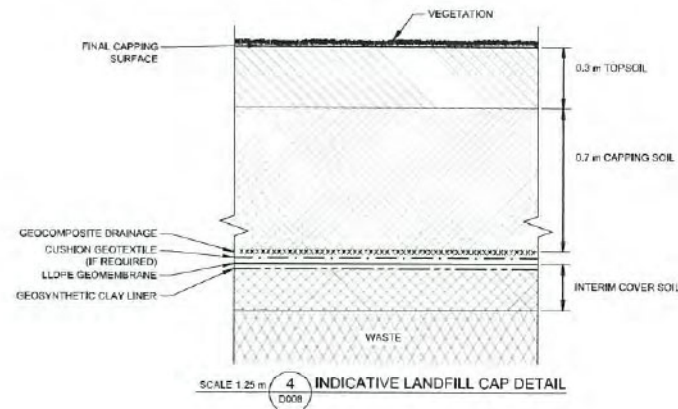
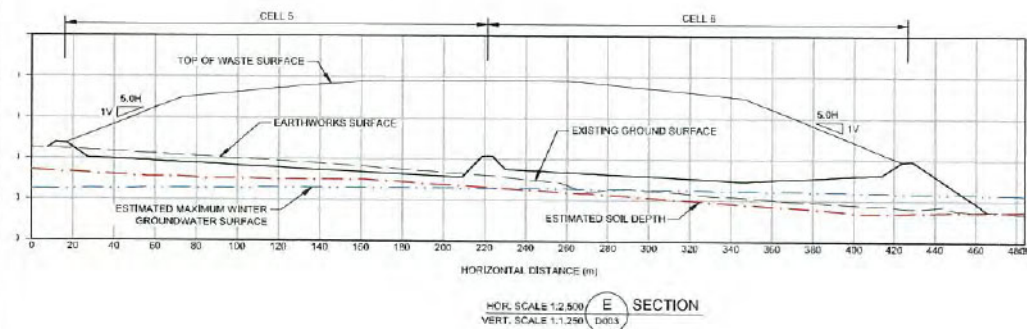
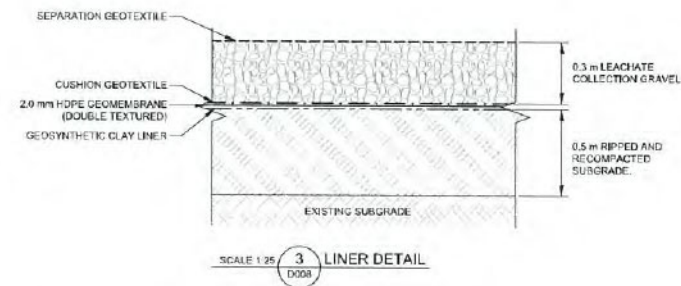
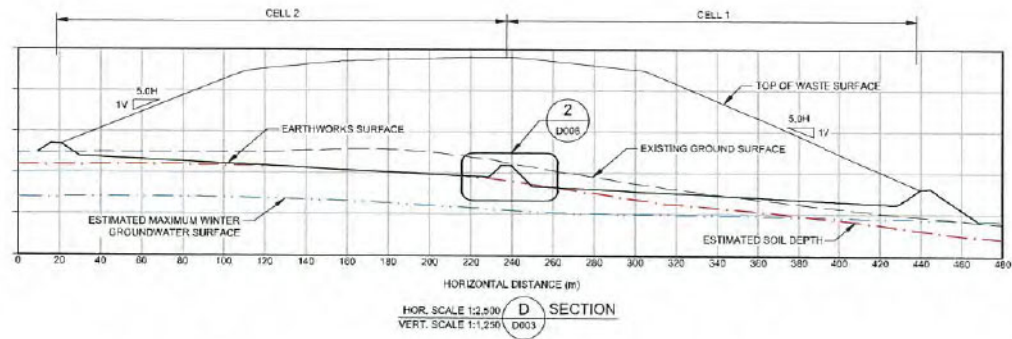
PERTH OFFICE
LEVEL 3, HAYLOCK STREET
WEST PERTH, WA 6005
AUSTRALIA
PH (819) 9243 7600
www.golder.com

TITLE
TYPICAL SECTIONS

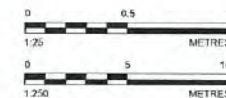
A 2014-02-1 ISSUE FOR COMMENT

DESIGNER L.DUPREEZ L.SMITH L.DUPREEZ
CHECKED L.DUPREEZ L.SMITH L.DUPREEZ
APPROVED

PROJECT NO. 147645033 DOCUMENT NO. PLANNING - FEB 2015 Rev. A 7 of 12 FIGURE D007



NOT FOR CONSTRUCTION



CLIENT
SITA AUSTRALIA

PROJECT
ALLAWUNA FARM LANDFILL

CONSULTANT

TITLE
TYPICAL SECTION AND DETAILS



PERTH OFFICE
LEVEL 3, HAVELOCK STREET
WEST PERTH, WA 6005
AUSTRALIA
T +61 (8) 9213 7600
www.golder.com

PROJECT NO.
147645033

DOCUMENT NO.
PLANNING - FEB 2015

Rev

8 of 12

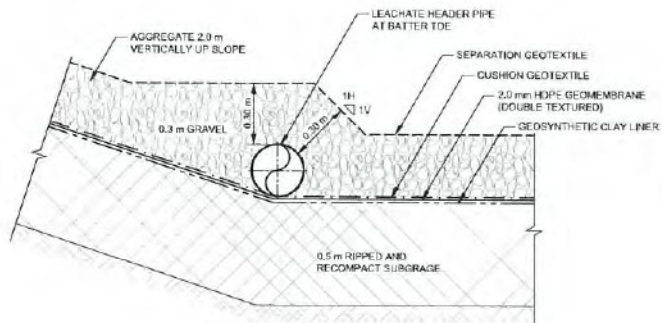
FIGURE
D008

A 2014-02-1 ISSUE FOR COMMENT

Rev DESCRIPTION

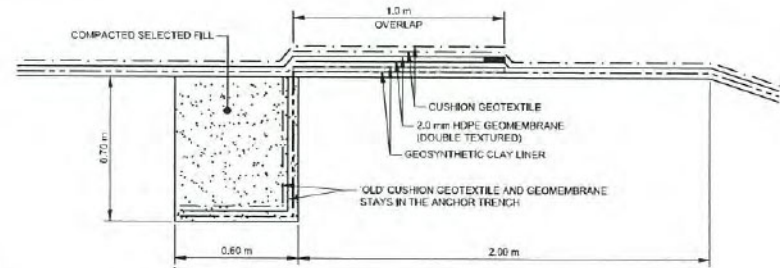
E.KING L.DUPREEZ L.SMITH L.DUPREEZ
PREPARE DESIGN REVIEW APPROVAL

DEVELOPMENT ASSESSMENT PANELS REFUSED 31 AUGUST 2015

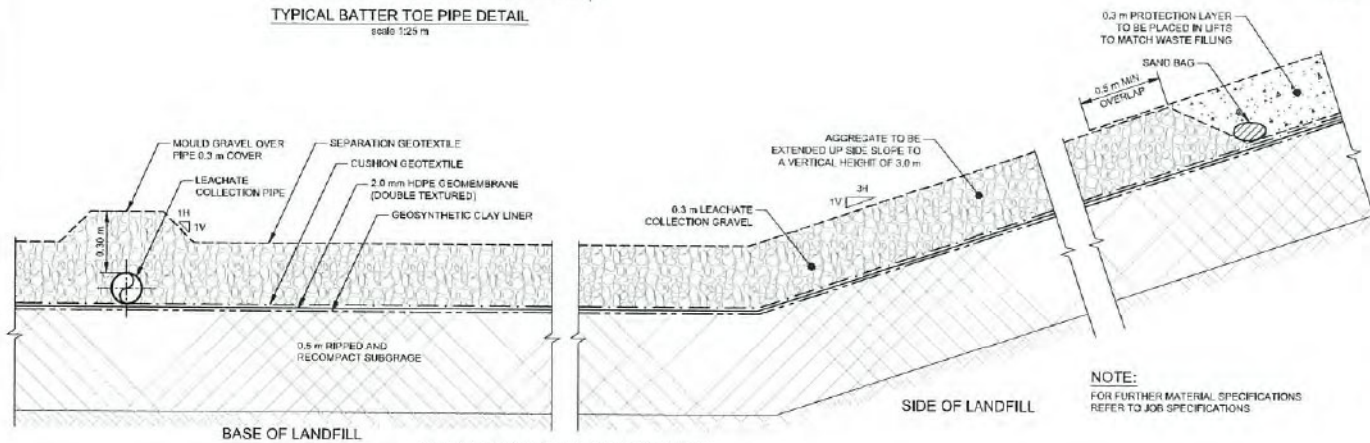


TYPICAL BATTER TOE PIPE DETAIL
scale 1:25 m

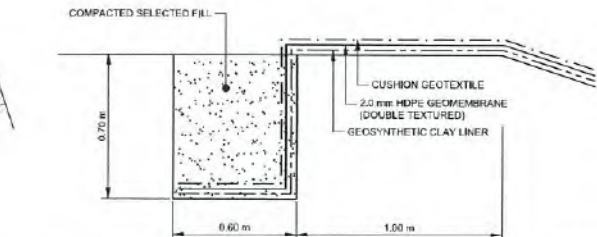
1. CUT CUSHION GEOTEXTILE AND GEOMEMBRANE AT ANCHOR TRENCH CREST
2. FOLD BACK CUSHION GEOTEXTILE AND GEOMEMBRANE
3. OVERLAP NEW GCL WITH EXISTING GCL USING BENTONITE PASTE
4. FOLD BACK GEOMEMBRANE AND OVERLAP WITH NEW GEOMEMBRANE LAYER. EXTRUSION WELD TOGETHER.
5. FOLD BACK CUSHION GEOTEXTILE AND OVERLAP WITH NEW CUSHION GEOTEXTILE. STITCH OR HEAT TACK THE OVERLAP.



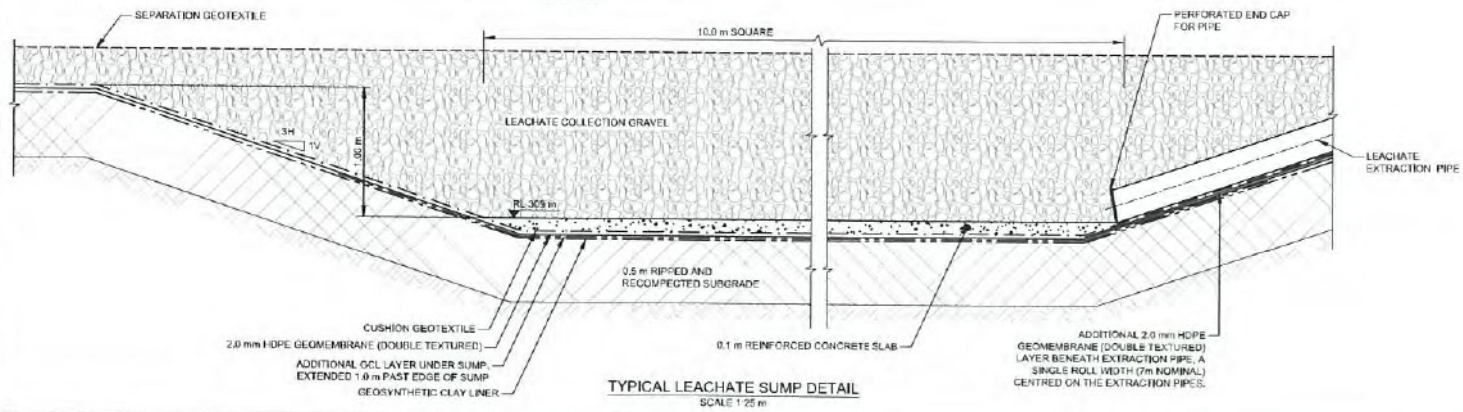
SCALE 1:25 m 5 TYPICAL ANCHOR TRENCH DETAIL ON DIVISION EMBANKMENT



TYPICAL BASE AND SIDE LINER DETAIL
SCALE 1:25 m



SCALE 1:25 m **6** TYPICAL ANCHOR TRENCH DETAIL ON PERIMETER EMBANKMENT



TYPICAL LEACHATE SUMP DETAIL
SCALE 1:25 m

NOT FOR CONSTRUCTION



CLIENT
SITA AUSTRALIA

CONSULTANT



**Golder
Associates**

PERTH OFFICE
LEVEL 3, HAVELOCK STREET
WEST PERTH, WA 6055
AUSTRALIA
[+61] (8) 9213 7600
www.golder.com

PROJECT

ALLAWUNA FARM LANDFILL

LANDFILL DETAILS

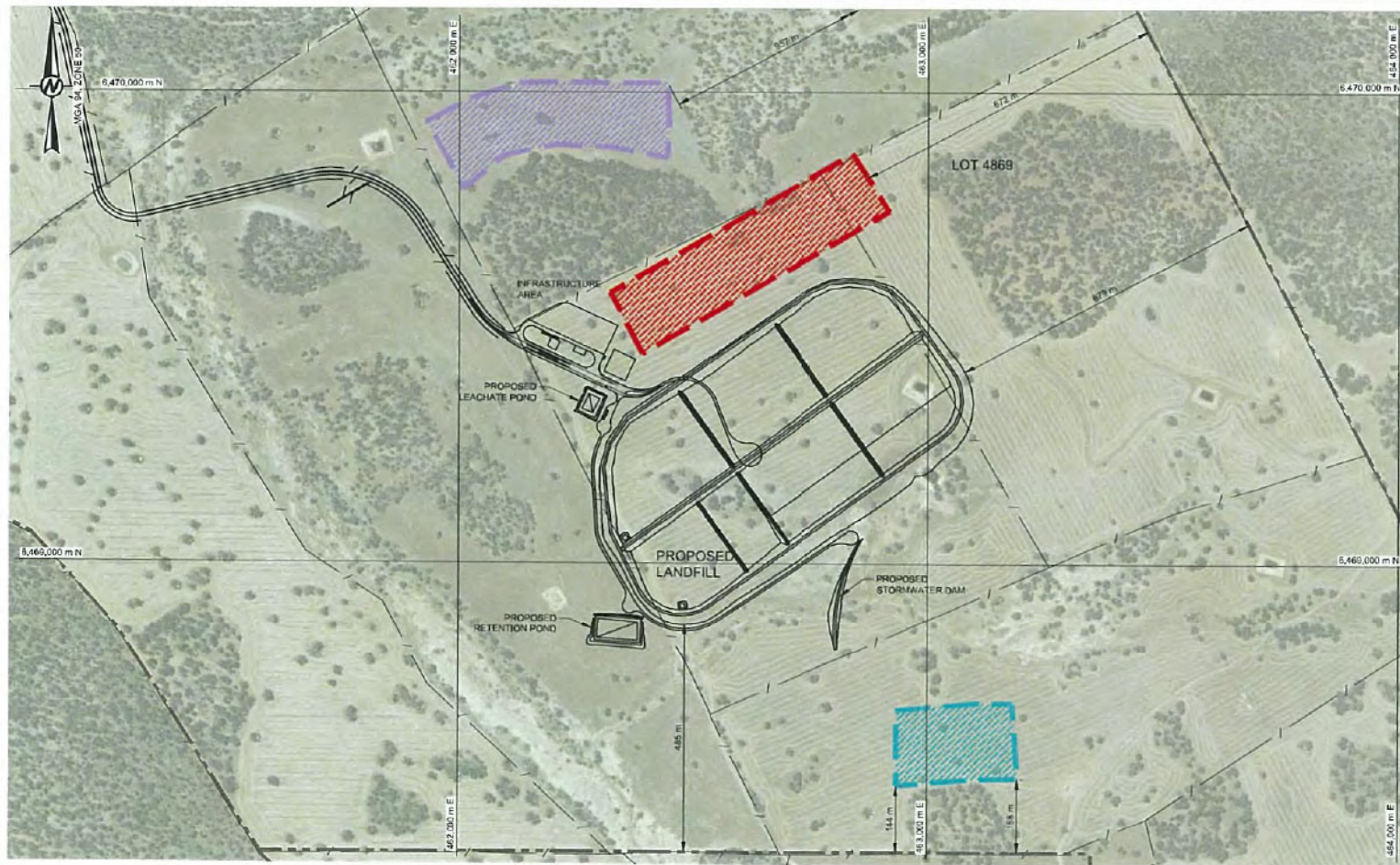
PROJECT No.
147645033

DOCUMENT NO:
PLANNING - FEB 2015

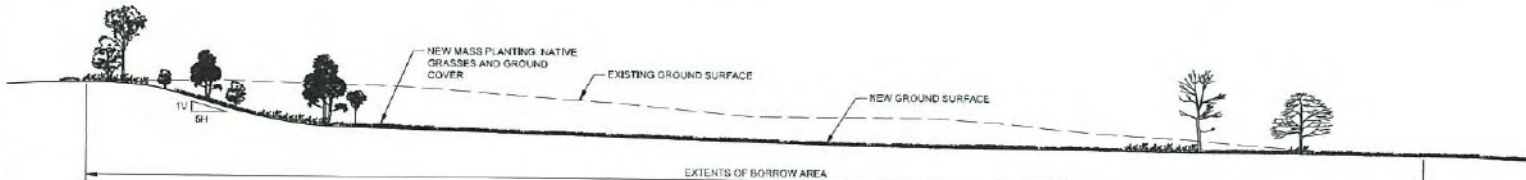
Rev. 9/12

D009

DEVELOPMENT ASSESSMENT PANELS REFUSED 31 AUGUST 2015



LAYOUT PLAN
SCALE 1:10,000 m



TYPICAL BORROW SECTION
SCALE 1:1,250 m

LEGEND:

- 
- BORROW AREA 1
- BORROW AREA 2
- BORROW AREA 3

— — — — — CADASTRAL BOUNDARY

— / — EXISTING FENCE

NOTE:

1. REFER TO D001 FOR GENERAL NOTES.

REFERENCE:

BASE MAP SHOWN FROM BOWMAN AND ASSOCIATES PTY LTD DRG. FILE
'FULL SIZED AERIAL PHOTO.jpg'

BORROW AREAS			
DESCRIPTION	VOLUMES (m ³)	AREA (ha)	AVERAGE DEPTH (m)
AREA 1	420000	8.8	4.75
AREA 2	320000	7.2	4.31
AREA 3	180000	4.0	4.20

NOT FOR CONSTRUCTION



CUENT
SITA AUSTRALIA

CONSULTANT



PERTH OFFICE
LEVEL 3, HAVELOCK STREET
WEST PERTH, WA 6005
AUSTRALIA
[+61] (8) 9213 7600
www.golder.com

PROJECT
ALLAWUNA FARM LANDFILL

TITLE
BORROW AREA LOCATIONS PLAN

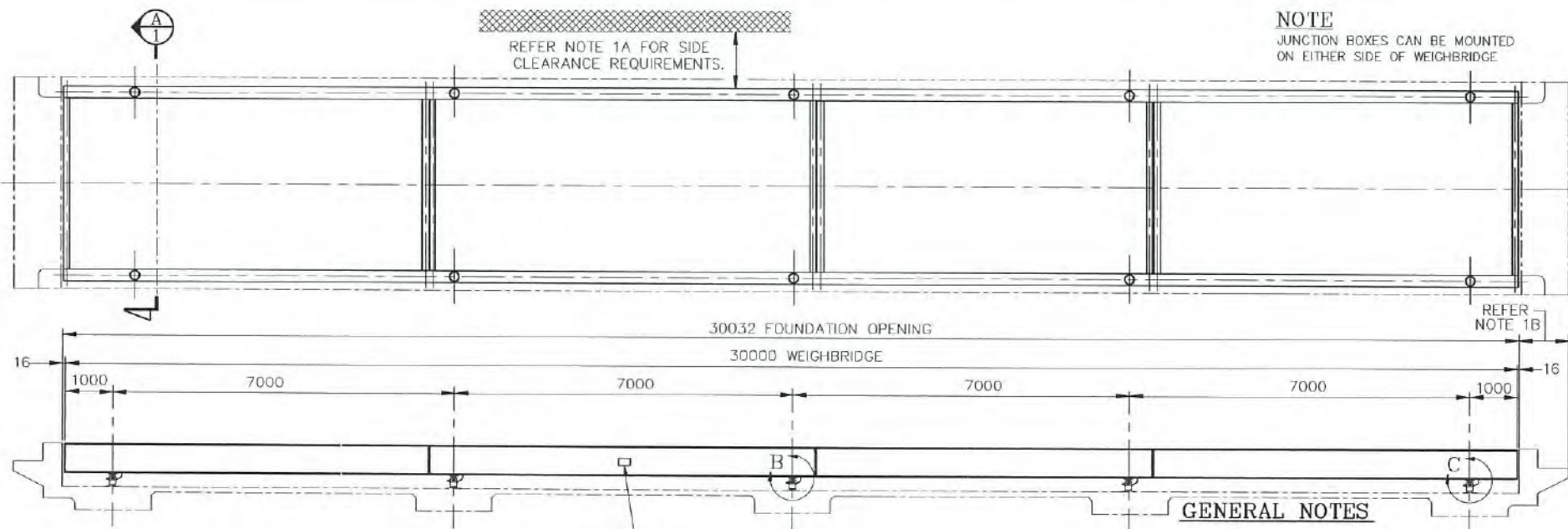
PROJECT No.	DOCUMENT NO.	Rev.	10 of 12	FIGURE
147645033	PLANNING - FEB 2015	A		D010

A	2014-02-1	ISSUE FOR COMMENT
---	-----------	-------------------

Rev.	YYYYMMDD	DESCRIPTION
------	----------	-------------

E.KING	L.DuPREEZ	L.SMITH	L.DuPREEZ
PREPARED	DESIGN	REVIEW	APPROVED

DEVELOPMENT ASSESSMENT PANELS REFUSED 31 AUGUST 2015



NOTE

JUNCTION BOXES CAN BE MOUNTED ON EITHER SIDE OF WEIGHBRIDGE

GENERAL NOTES

1 WEIGHTS & MEASURES

STATE WEIGHTS & MEASURES AUTHORITIES REQUIRE CERTAIN MINIMUM REQUIREMENTS RE CLEARANCE AT SIDE OF SCALE, LENGTH OF APPROACH, POSITION OF INDICATOR ETC. THESE REQUIREMENTS SHOULD BE CLARIFIED WITH LOCAL AUTHORITIES WHEN PLANNING WEIGHBRIDGE LOCATION.

(A) CLEAR SPACE REQUIRED AT BOTH SIDES OF SCALE IN SOME STATES IS (1) METRE. CHECK WITH LOCAL AUTHORITIES FOR MINIMUM REQUIREMENTS FOR EACH INSTALLATION.

(B) LENGTH OF LEVEL APPROACH DEPENDS ON USE OF SCALE, IE PUBLIC OR PRIVATE WEIGHBRIDGE. THEREFORE THE STATE WEIGHTS & MEASURES AUTHORITY SHOULD BE CONTACTED FOR A FIRM DECISION APPLICABLE FOR EACH INSTALLATION.

(C) LOCATION OF INDICATOR/WEIGHHOUSE DEPENDS ON STATE REQUIREMENTS. THIS MATTER SHOULD BE RESOLVED WITH THE STATE WEIGHTS AND MEASURES DEPARTMENT.

(D) DIGITAL INDICATOR READOUT TO BE LOCATED NOT MORE THAN 6 METRES FROM THE PLATFORM EDGE, AND THE OPERATOR IS PROVIDED WITH A CLEAR VIEW OF THE ENTIRE PLATFORM.

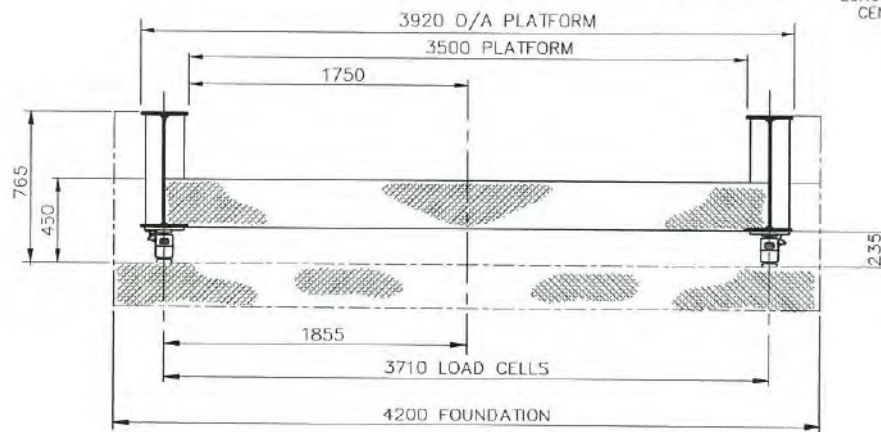
2 WEIGHBRIDGE CLEARANCE

A 16mm CLEARANCE BETWEEN WEIGHBRIDGE AND FOUNDATION CURB CHANNELS (BOTH ENDS) WHICH MUST BE HELD, AND HAS BEEN ALLOWED FOR.

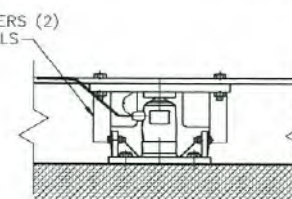
3 LOAD RATING

THE MAXIMUM ALLOWABLE LOADS ARE:
9000kg PER SINGLE AXLE, 16500kg PER TANDEM AXLE
WITH AXLE SPACING BETWEEN 1.3m AND 2.8m AND NO LESS THAN 3m BETWEEN INSIDE AXLES OF ADJACENT TANDEMS.
23500kg PER TRI-AXLE BOGIE WITH AXLE CENTRES OF 1.3m.

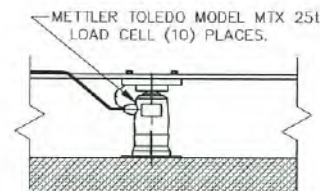
THE MAXIMUM ALLOWABLE TOTAL WEIGHT ON WEIGHBRIDGE AT ONE TIME TO BE NO MORE THAN 100000kg.



SECTION AA



DETAIL B



DETAIL C

INFORMATION PROVIDED BY BOWMAN AND ASSOCIATES, 06/02/2015

NOT FOR CONSTRUCTION

CUSTOMER
SITA AUSTRALIA

PROJECT
ALLAWUNA FARM LANDFILL

CONSULTANT

TITLE
WEIGHBRIDGE DETAILS



PERTH OFFICE
LEVEL 3, HAYDOCK STREET
WEST PERTH, WA 6005
AUSTRALIA
T+61 (0) 9213 7600
www.golder.com

PROJECT NO.
147645033

DOCUMENT NO.
PLANNING - FEB 2015

REV
A

11 JUL 12

FIGURE
D011

A 2014-02-1 ISSUE FOR COMMENT

E.KING L.DUPREEZ L.SMITH L.DUPREEZ

DATE 14/02/2015 DESCRIPTION

PREPARED DESIGN REVIEW APPROVED

