



Telstra concrete cover approx 30mm lower than footpath.



Kerbing cut off straight. Needs to be sloped.



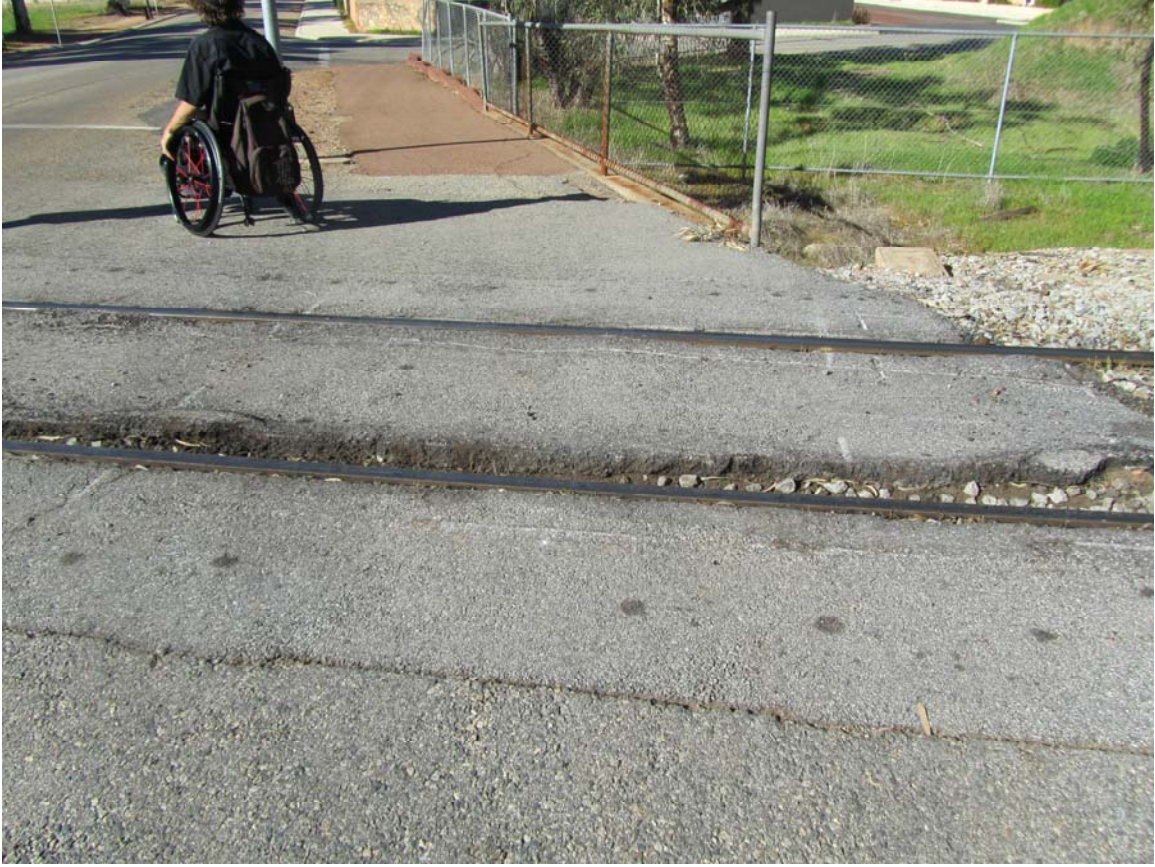
As above.



Macartney Street railway crossing so bad that wheelchairs get stuck in the lines and gophers drive across the line in the middle of the road as the sides are so uneven. (since these photos were taken Brookfield Rail has re bitumised this section)



See above.



See above.



See above.



This section of footpath is possible the worst in York. Extremely uneven with a steep angled gradient. Needs to be pulled up and relaid.





As above.



As above.



As above.



The footpath from Macartney is uneven in many places.



More paving on Howick st that needs fixing.



As above.



As above.



As above.





Ramp out the front of doctors surgery that leads across Howick Street to the Settlers carpark has no ramp on the other side.



As above.



Telstra inspection point too high above paving.



As above.



Ramp out the front of toilets is 100mm high and there is no disabled signage on the toilet.



South Street paving very uneven in places.



As above.



As above.





Same problem as Howick street rail crossing.



As above.



As above.



As above.



Joaquina and Railway Street intersection does not have proper ramps.



The drain between Howick Street and the Castle needs to have a fence. Very dangerous at night.